



Medina River Watershed Protection Plan

Medina River Below Diversion Dam

Watershed Protection Plan Stakeholder Meeting

St. Louis Braden Keller Community Center, Castroville
June 5, 2025

Mary Michael Zahed, Program Specialist
Tina Hendon, Program Specialist
Texas A&M AgriLife, Texas Water Resources Institute



Welcome!

Introductions & Overview of WPP

Shifting to Implementation – *What do we do now?*

Timeline and Next Steps

Guest Presentations

Potential Implementation Projects

Implementation Discussion

Upcoming Events

Potential dates for next meeting

Chapters 1 - 5

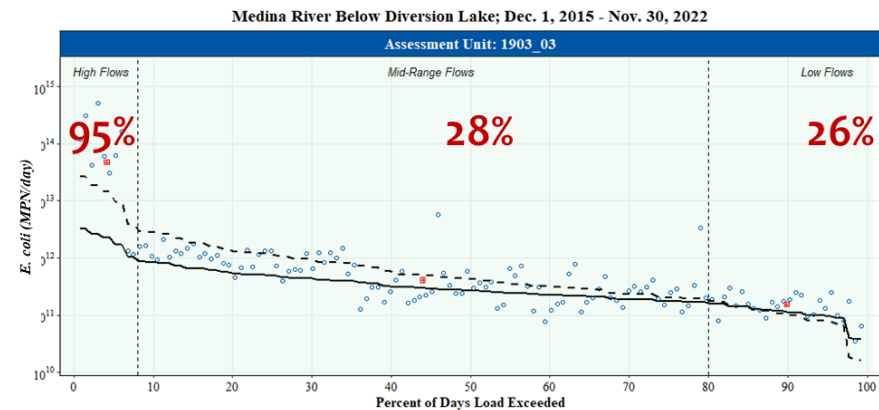
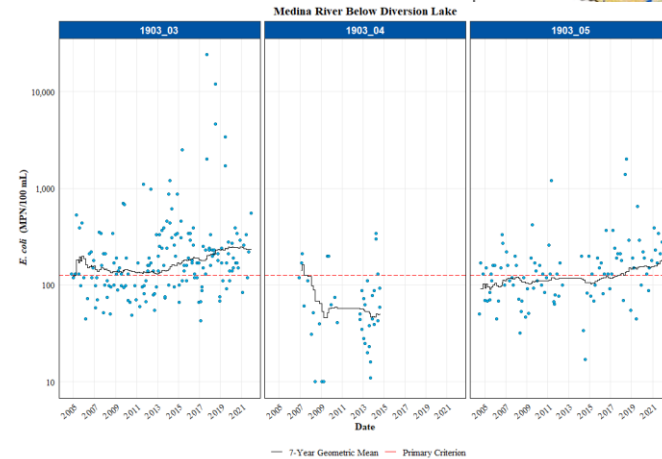
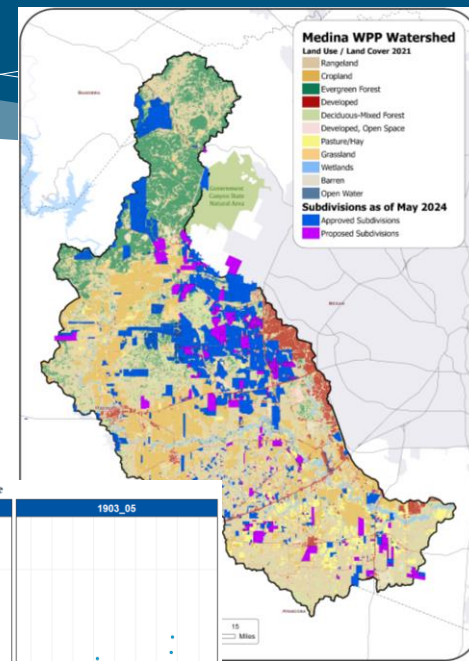
Chapter 1 Introduction to Watershed Management

Chapter 2 Watershed Characterization

Chapter 3 Water Quality

CHAPTER 4 POTENTIAL SOURCES

CHAPTER 5 POLLUTANT SOURCE ASSESSMENT.



Chapters 6 - 10

Chapter 6 Recommended Implementation Strategies

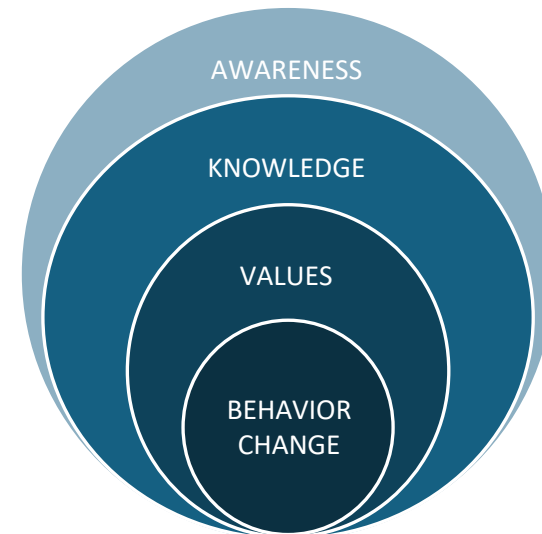
- Reduce SSOs and Unauthorized Discharges.....
- Address Failing On-Site Sewage Systems
- Manage Pet Waste
- Manage Stormwater Runoff.....
- Implement Water Quality Management Plans and Conservation Plans ..
- Reduce Feral Hog Population
- Reduce Illicit Dumping.....
- Restore Degraded Streams and Riparian Areas
- Conserve Land
- Management Measure – Manage Abandoned Wells

Chapter 7 Education and Outreach

Chapter 8: Plan Implementation.....

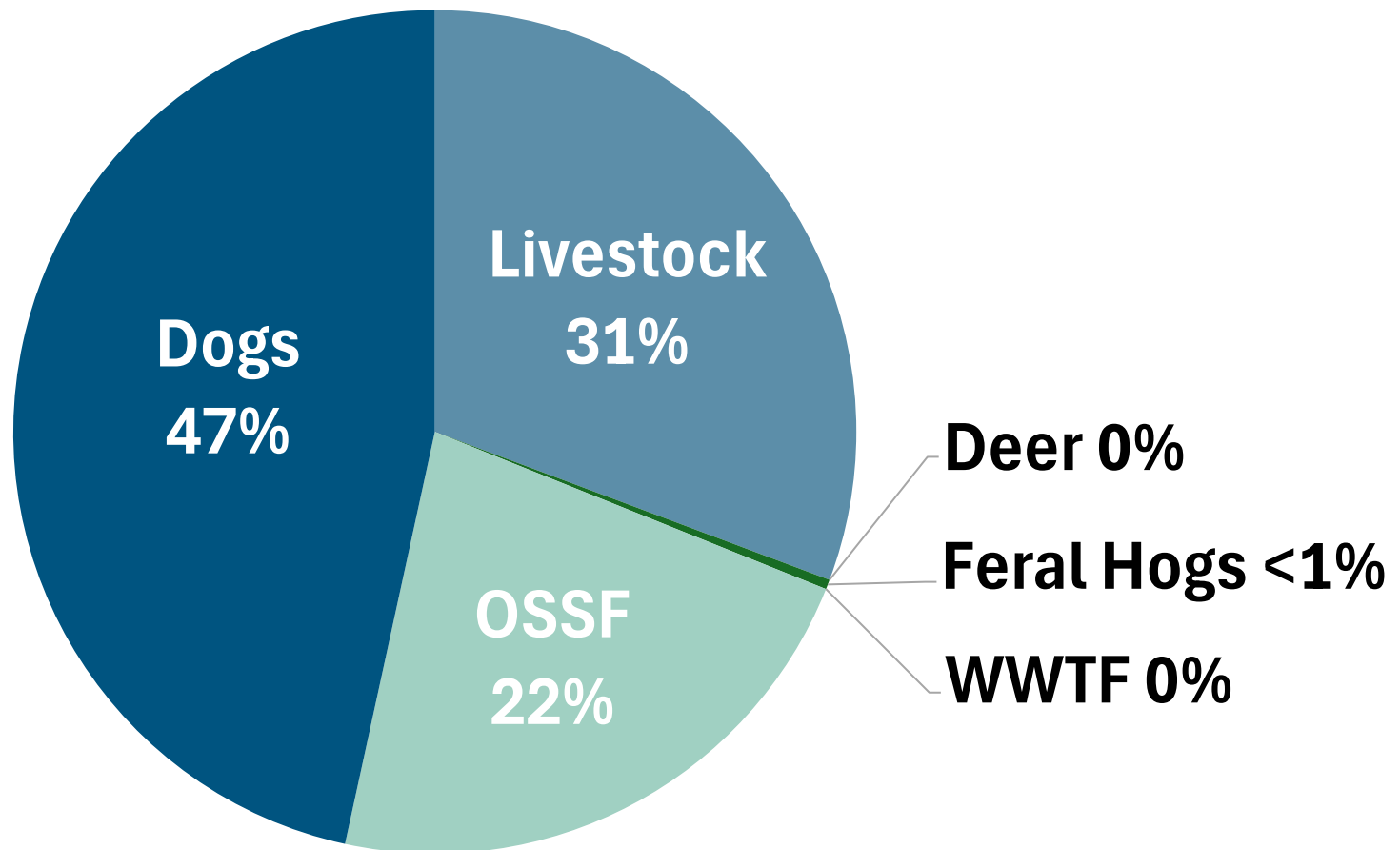
Chapter 9: Resources.....

Chapter 10: Measuring Success.....



Portion of Load Reductions by Source

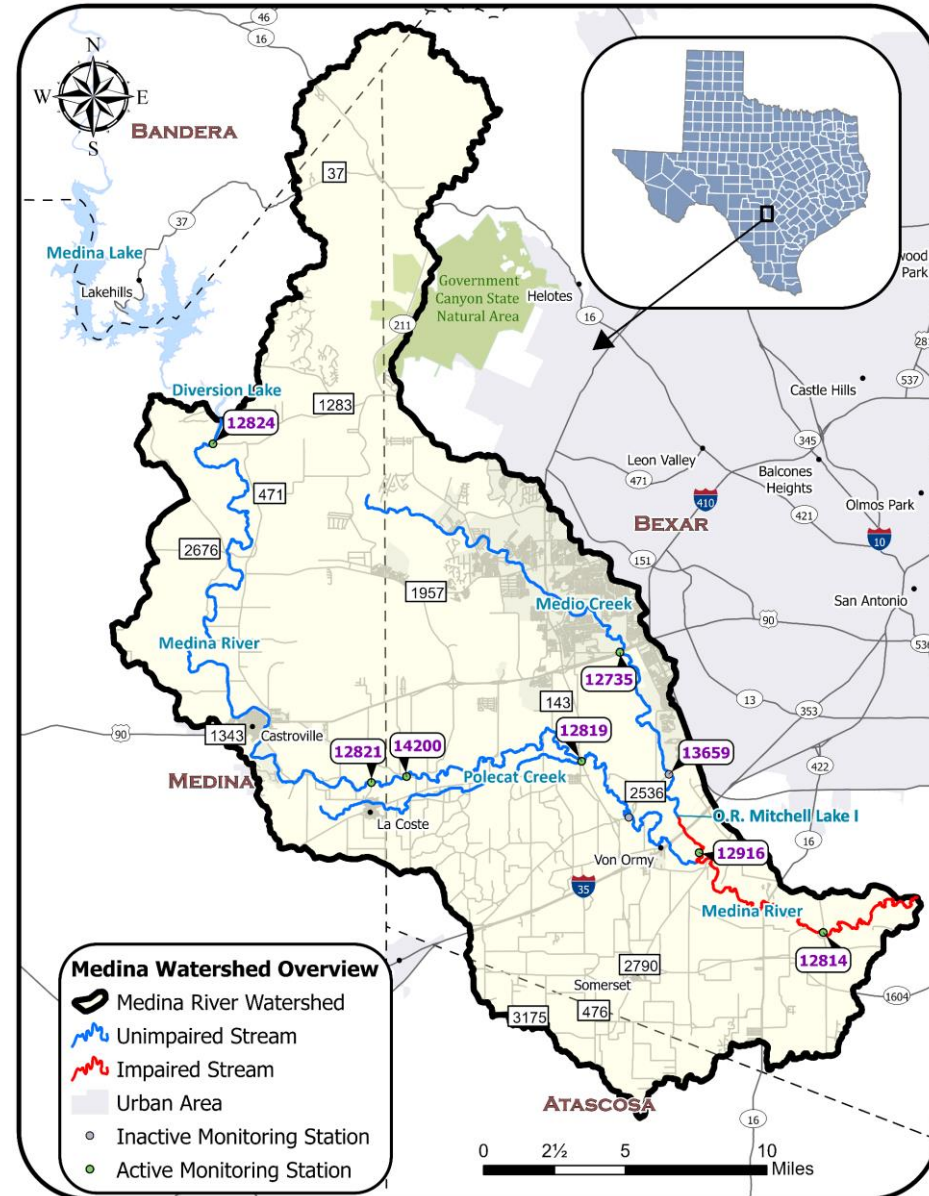
*Through implementation of Management Measures
in the WPP*



Water Quality Targets

Year	Medina R Station 12814	Medio Crk Station 12916
2022*	223	175
Year 0	223	175
Year 5	175	151
Year 10	126	126

E. Coli targets are expressed as cfu/100mL





Introductions & Overview of WPP

Shifting to Implementation – *What do we do now?*

Timeline and Next Steps

Guest Presentations

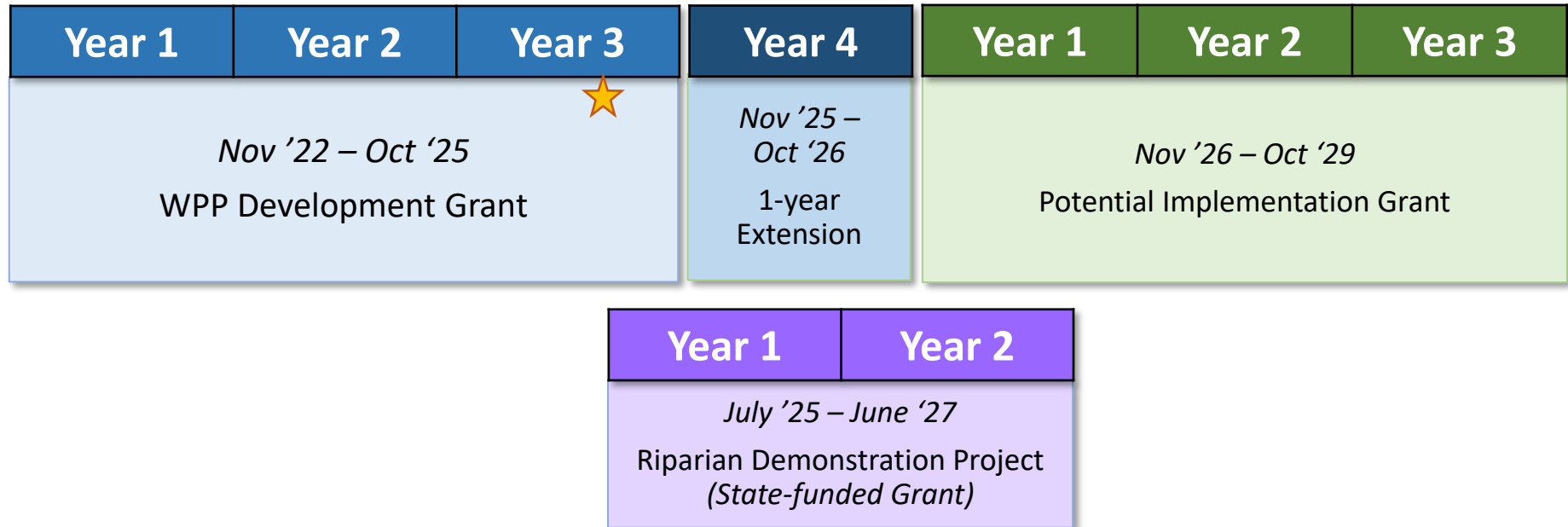
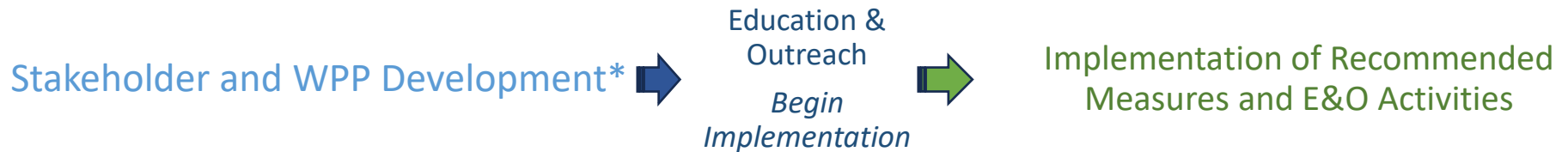
Potential Implementation Projects

Implementation Discussion

Upcoming Events

Potential dates for next meeting

Project Timeline



**Anticipate EPA review comments or approval by end of June.*

Current & Next Steps

CURRENT FUNDING

(through 10/25)

- ✓ WPP Review & Acceptance
- ✓ Develop ideas for demonstration projects
(e.g. riparian restoration, LID/GI, conservation planning, etc)
- ✓ Continue E&O events
(new or existing programs)
- ✓ Continue stakeholder facilitation & communication

1-Yr EXTENSION

(through 10/26)

- ✓ Demonstration project development, planning
- ✓ Expand E&O opportunities,
(workshops, trainings, field days, etc)
- ✓ Begin Implementation of Priority Measures
(Handout)
(OSSF Mgmt, Pet Waste Mgmt, Stormwater Mgmt, Riparian/Stream Restoration, Conservation Planning, Feral Hog Mgmt, Illicit Dumping Mgmt)

Riparian Project

(through 5/27)

- ✓ Demonstration project construction
- ✓ Expand E&O opportunities,
(workshops, trainings, field days, etc)

WHAT...

The Message: Clean and healthy streams and rivers

WHEN & WHERE...

Print & e-Media

Community Outreach Events

Volunteer Engagement

Educational Signage

Youth Education Programs

Watershed tours & Land Management Demonstration Projects

Stakeholder Meetings



HOW...

Resources & Funding...

General Audience Education

- ★ Texas Watershed Steward Program
- ★ Riparian Management & Stream Restoration
- ★ Feral hog management
- Community outreach events



Urban Focused

- ★ Healthy Lawns & Healthy Waters
 - Stormwater management
 - Pet waste management
 - Rainwater harvesting
 - Water conservation

Ag & Rural Focused

- ★ Well owner education
- ★ Septic system management
- ★ Ag land & animal management
 - Nutrient & soil management
 - Small landowner programs

★ Starred programs already available through existing nonpoint source or other grant funding (handout).



Introductions & Overview of WPP

Shifting to Implementation – *What do we do now?*

Timeline and Next Steps

Guest Presentations

Potential Implementation Projects

Implementation Discussion

Upcoming Events

Potential dates for next meeting



Conserving  Texas Habitats

WHF is a 501(c)(3) nonprofit organization working to help landowners help the land on a statewide basis.



Providing on-the-ground restoration, management, and generational sustainability of grassland habitats for the conservation of soil, water, air, animals, plants and humans.



*It is our goal to improve our
quality of life through
restoration of our natural
resources*

*“Resilient prairies and healthy
Watersheds”*

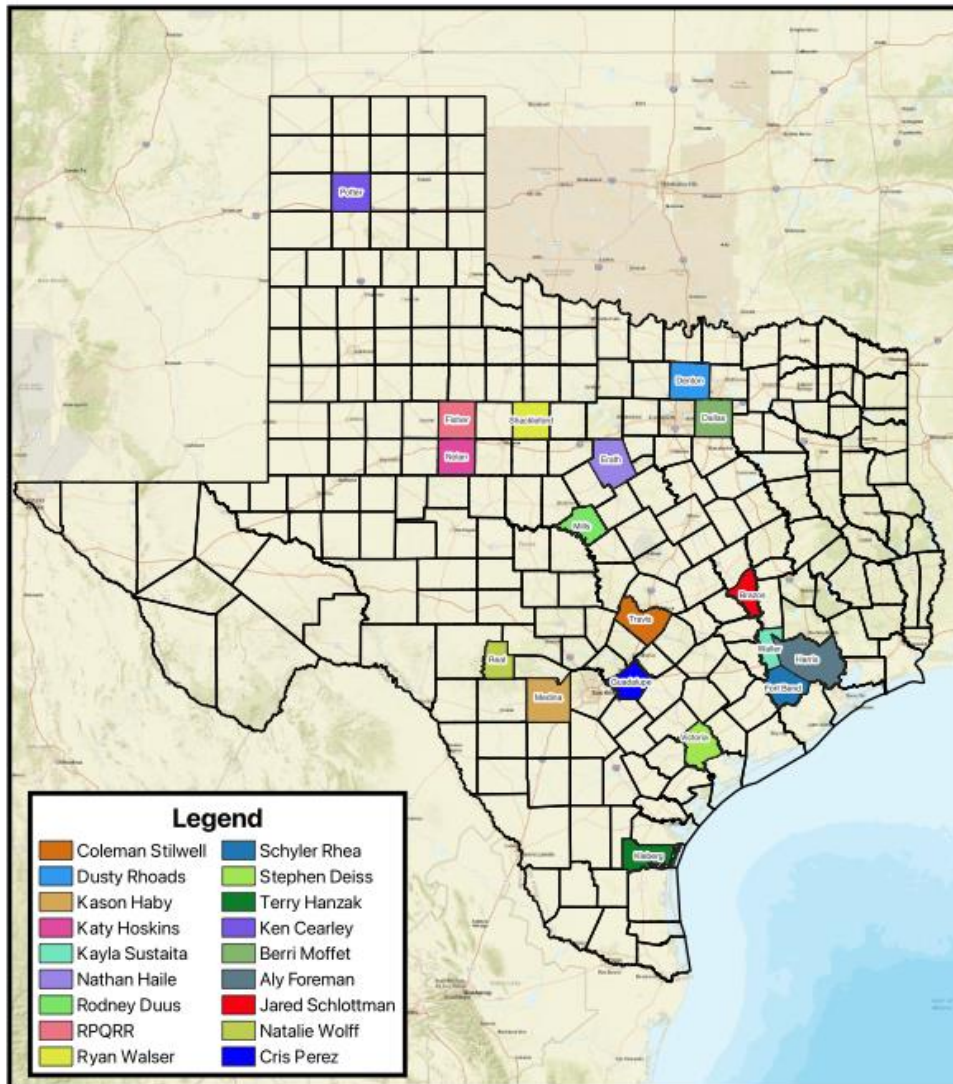
Cooperative Agreement

Through a Cooperative Agreement with USDA-NRCS, we work with landowners from initial site assessments to conservation planning, implementation and monitoring free of charge to the landowner





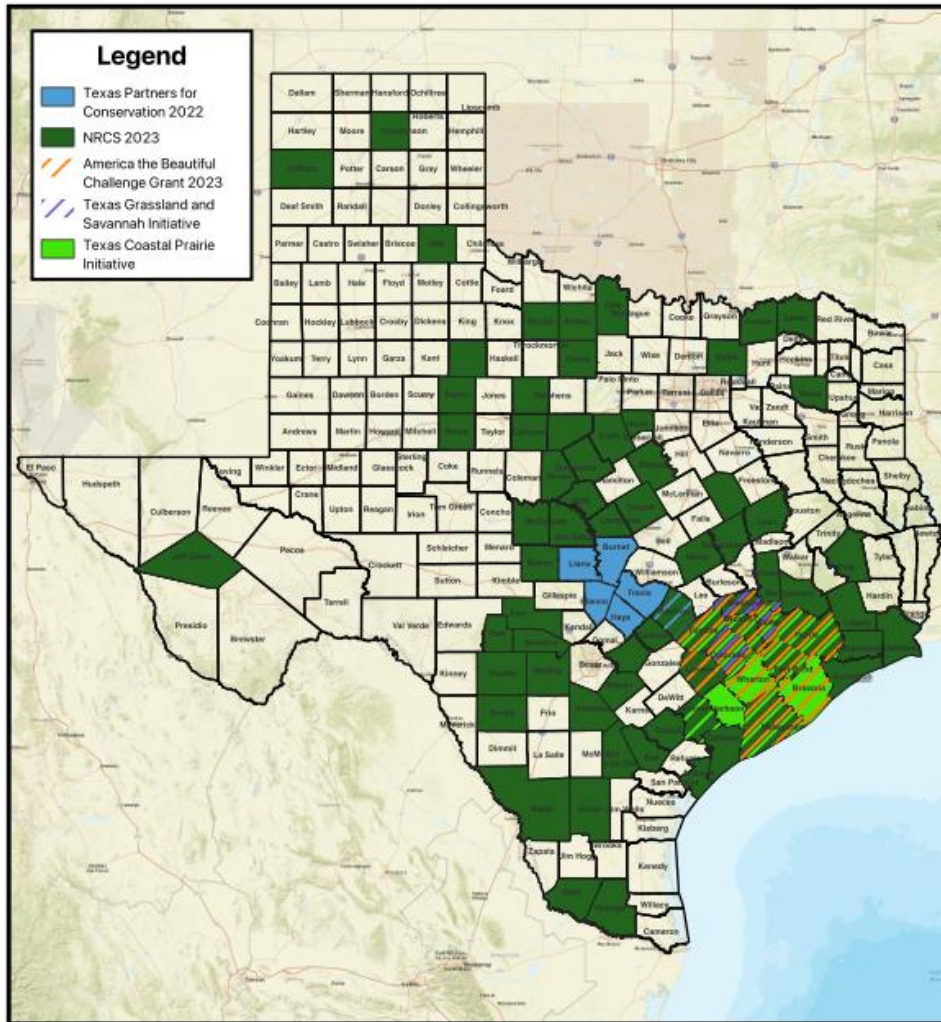
Wildlife Habitat Federation
Employees and Contractors



WHF Employees and Sub-Contractors provide landowners and managers with professional level assistance on subjects related to their agronomic, rangeland, wetland and/or wildlife resources



Wildlife Habitat Federation Landowner Impact in Texas: 2024 77 out of 254 Texas Counties



In 2024 alone these professionals assisted landowners in 77 counties



2024 Impact Report

Serving Texans since 2004, WHF has provided more than \$58.1M in ecosystem services to landowners and project partners.

2024 annual value of ecosystem services = **\$27,055,496**

Participated in 61 outreach events
reaching 11,175 people



Assisted 197 landowners in
bringing 43,082 acres under
improved management

Developed 75 management plans
for 59,009 acres



Provided technical assistance on 199,908 acres



A Win for the Pollinators

Texas Parks & Wildlife Foundation is supporting WHF's efforts to inspire landowners to take action to help native pollinators and prairies thrive.

This project was made possible by Pollinators & Prairies, a program of Texas Parks and Wildlife Foundation, with support from Phillips 66.



Wildflowers!

H-E-B's Our Texas, Our Future is helping WHF's conservation community plant more food sources and habitats for pollinators and wildlife.

Learn more at <https://ourtexasourfuture.com>.



Supporting Ranchers

From grasslands to the livestock and ranchers that depend on them, WHF is providing technical assistance, conservation planning, and implementation services to sustain heritage ranches.

Posted: We Care

WHF is honored to highlight landowner actions that restore resilient grasslands and healthy watersheds for all Texas habitats.



43,082 acres under improved management

Sequesters
1.6M pounds of
carbon



Fixes 4.3M pounds
of nitrogen in
improved soils



Holds 2.1M pounds
of phosphorus
values at optimal
levels



Stewards 4.3B
gallons of water



CONNECT WITH US



210-422-1600



whf-info@whf-texas.org



www.whf-texas.org



Follow us on social media!
[@whftexas](#)





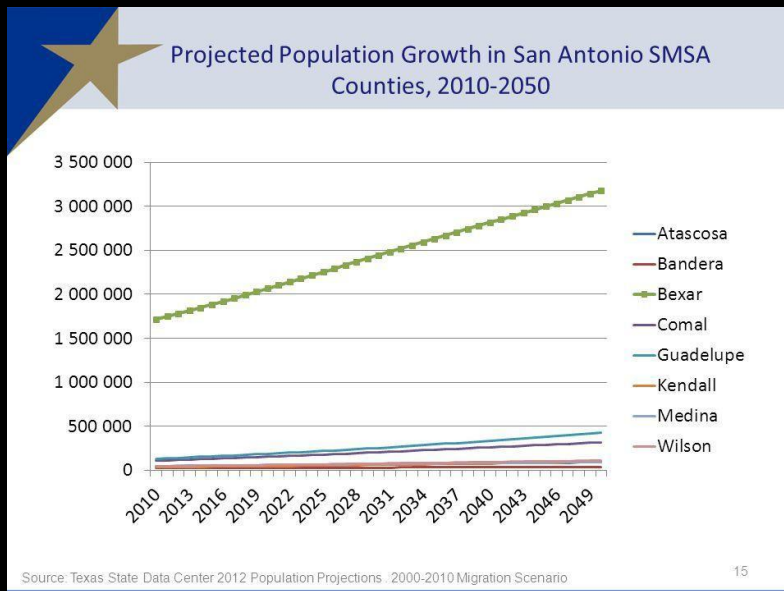
RIVER AID SAN ANTONIO



Mission Statement

Dedicated to promoting and facilitating stewardship of the San Antonio River Basin through volunteer opportunities and community engagement.

- Additional 1,000,000 Residents by 2045
- Urban Sprawl
- Climate Resiliency



- More than \$250 Million invested



Over 150 Clean-ups



Watershed Clean-up Impact

Over 5,500 Volunteers
Over 13,000 Volunteer Hours



Watershed Clean-up Impact

Over 500,000 LBS of Trash Recovered



Additional Programs

Lorence Creek Preserve



Water Quality Monitoring



BASURA BASH

**One day, all volunteer
event to clean San
Antonio area waterways.**

- 23 Sites
- 2,000+ Volunteers
- 30th Annual



Basura Bash Impact



731.49 Tons of Trash



7,302 Tires Recycled



17.85 Tons of Metal Recycled



48,153 Volunteers



Civic Partnerships



CITY OF SAN ANTONIO
PARKS & RECREATION



**SOLID WASTE
MANAGEMENT**



Grassroots Template >>> Serve Additional Pop.



Populace + Recreation contribute to Waste. The need is widespread.

Demands Development of Mission Reach

Questions?

Thank You!



Introductions & Overview of WPP

Shifting to Implementation – *What do we do now?*

Timeline and Next Steps

Guest Presentations

Potential Implementation Projects

Implementation Discussion

Upcoming Events

Potential dates for next meeting

Texas Riparian and Stream Ecosystem Education

- ✓ Focus on priority watersheds
- ✓ Increase citizen knowledge about riparian zones, their benefits and BMPs to minimize NPS pollution
- ✓ Connect landowners with resources



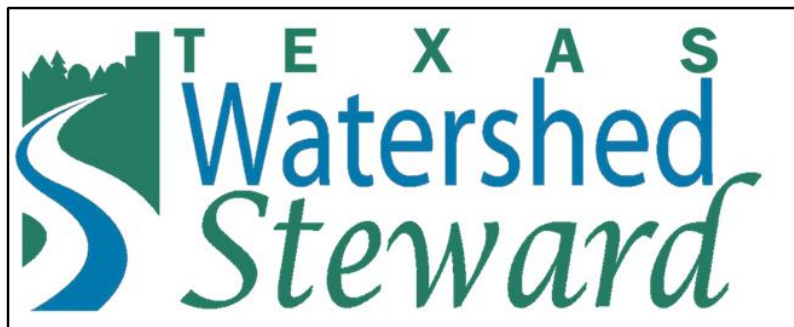
Texas Well Owners Network (TWON)

- ✓ Texas residents that depend on household wells for drinking water
- ✓ Texas' groundwater sources, water quality, water treatment, well maintenance
- ✓ Well-testing and results



Texas Watershed Stewardship Program

- ✓ Science-based, watershed education to aid stakeholders in identifying and taking action to address local impairments
- ✓ Learn about the function of watersheds, impairments and strategies for watershed protection



Lone Star Healthy Streams

- ✓ Aims to protect Texas waterways from bacterial contamination from livestock operations and feral hogs
- ✓ Topics are tailored to the stakeholder needs



Healthy Lawns and Healthy Waters

- ✓ Enhancing awareness and knowledge of BMPs for residential landscapes
- ✓ Attendees will learn about the design and installation of residential rainwater harvesting systems and appropriate turf and landscape species based on local conditions



Other Topics

- ✓ Youth Education
(e.g. 4H water curriculum, Boys and Girls club, youth water camp for cultural shift toward natural resources, etc)
- ✓ Septic tank maintenance workshop and resources
(existing programs)
- ✓ Educational booth at community planned events
(farmers markets, Earth day events, fishing tournaments, rodeos, etc.)
- ✓ Tree planting
(HEB and A&M Forest Service programs)
- ✓ Field days for farmers/ranchers
- ✓ Texas Stream Team Trainings
- ✓ Pet waste stations
- ✓ Rainwater harvesting

Discussion

- ✓ Based on topics covered in this meeting, please use the handout of existing E&O programs to prioritize activities for the next year
- ✓ Rank your top 5 potential efforts by listing 1 – 5 on the left column



Ranking	Category	Topic	Potential Efforts
	General	General Water Resources	Educational materials

- ✓ Efforts are separated into **categories** and specific **topics**
- ✓ Please provide additional potential ideas in the space below if desired

Additional Ideas:		

Upcoming Events

Texas Well Owners Network

- **October 9th**
- Bexar County Extension, San Antonio River Authority



New & Small Landowner workshop

- **Fall 2025**
- Medina County SWCD, Hondo

Soil Health & Cover Crops in Cattle Operations Field Day

- **Winter 2025/Spring 2026**
- Southwest Farms, Morales Seed and Supply
- Natalia and Devine

Upcoming Events





Medina County Range Field Day

June 12, 2025
Registration: 8:00 A.M. | Program: 8:30 A.M.-2:30 P.M.
Graff 7A Ranch
911 US-90 East, Hondo, TX 78861

Topics

- **Brush and Perennial Weed Identification and Control Walk and Talk**
 - Dr. Megan Clayton, Extension Range Specialist
- **Range Ward Electric Fencing Utilization and Demonstration**
 - Aaron Halydier, Range Ward
- **Technologies in Range and Pasture Management**
 - Kason Haby, Texas Grazing Land Coalition Technical Assistance Specialist
- **Skid Steer Brush Control Implement Demonstration**
 - Kurt Wetz, Williamson County Equipment Co.
- **Implementing Drones for Brush Control**
 - Ethan Salinsky, Sky Senderos

Thank you to our Sponsors



Three (3) Texas Department of Agriculture Private Applicator CEUs will be given with this program. Please make sure to bring your license with you and do not forget to pick up your certificates before you leave!

Registration: \$25/person (meal included)
RSVP by June 5th by calling the Medina County AgriLife Extension Office at 830-741-6180.

Educational programs of the Texas A&M AgriLife Extension Service are open to all people without regard to race, color, religion, sex, national origin, age, disability, genetic information or veteran status. The Texas A&M University System, U.S. Department of Agriculture, and the County Commissioners Courts of Texas Cooperating



FRIENDS OF THE CASTROVILLE REGIONAL PARK

P.O. Box 173
Castroville, Texas 78009
830-931-4176
patrickconner01@gmail.com



www.castrovilletx.gov

New: Facebook Page

✓ Medina River Watershed Protection (www.facebook.com/MedinaRiverWPP)



Next Stakeholder meeting dates?

Quarterly meetings?

Thank You!

Mary Michael Zahed

Program Specialist, TWRI

mary.lipfordzahed@ag.tamu.edu

979-314-8092

Tina Hendon

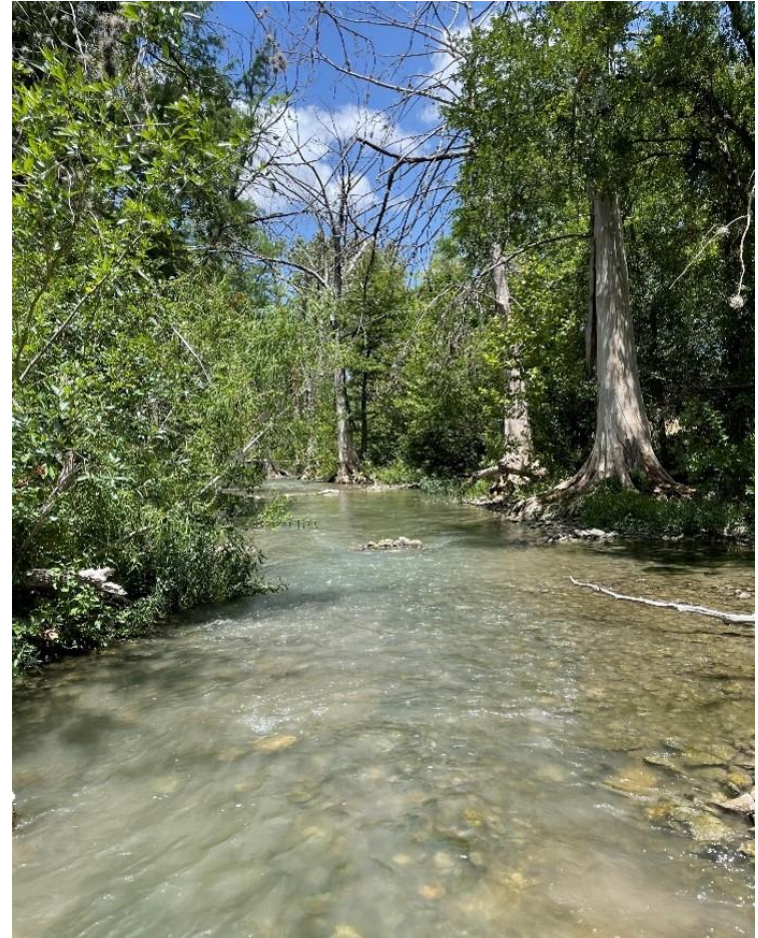
Program Specialist, TWRI

Tina.Hendon@ag.tamu.edu

979-314-2472



medina.twri.tamu.edu/



Medina Stakeholder mtg #8
June 5, 2025
Meeting Notes

Introductions & Overview of WPP

Slides went over the development of each chapter of the WPP.

Shifting to Implementation – What do we do now?

Timeline and Next Steps

Review of existing and upcoming grant timelines

Existing:

Our current grant to develop the WPP allows for:

- Developing ideas for demonstration projects
- Continuing E&O and stakeholder facilitation

The 1-yr no-cost extension of existing WPP grant allows for:

- Plan riparian demo & continue E&O

The State-funded Riparian demonstration project begins July 2025 and allows for:

- Installation of riparian demonstration project and E&O utilizing the demonstration
- Looking at the Castroville Regional Park for location of demonstration

Possible upcoming:

Potential implementations grant to implement management measures:

- EPA acceptance of the WPP makes this project more competitive

To develop priorities for implementation

- Need to know Who, What, Where and How

Guest Presentations

For success and sustainability, and hitting the Who, What, Where, and How, it is pertinent to work with organizations already providing services in the watershed. Two of these are with us today. Presentations by:

- Wildlife Habitat Federation (Garry Stephens)
- River Aid San Antonio (Chris Belcher).

****Lorance Creek park
– good demonstration of
LID/GI features in a
residential neighborhood****

Potential Implementation Projects

E&O programs that can be brought to the watershed include:

- Statewide programs, e.g. Riparian and Stream Ecosystem Education.

Medina Stakeholder mtg #8

June 5, 2025

Meeting Notes

- Other topics, e.g. Youth education, OSSF maintenance, community events, tree planting events (HEB, TFS), ag field day, Tx Stream Team, rainwater harvesting workshop, etc.

Implementation Discussion

Participants filled out ranking spreadsheets to recommend high priority E&O programs for the coming year.

Priorities of the group included:

- Workshops for landowners, producers, and small-acreage landowners
- Water resources and aquifer general educational programming and materials
- Septic tank workshops for residents and practitioners
- Green Infrastructure and Low Impact Development practices and demonstration projects as well as education to developers
- Water capture, home landscape and irrigation workshops
- Riparian and stream ecosystem workshops

Upcoming Events

TWON – Oct 9th

New & small landowner (MVSWCD) October 25th 2025

Soil Health & Cover Crops Field Day (TWRI, Southwest Farms, Morales Feed and Supply, WHF) Winter '25/Spring '26

Range Field Day (Medina AgriLife Extension) June 12th

Friends of the Castroville Regional Park – looking for volunteers to support Castroville Regional Park and future Constructed Wetland site. Workdays monthly except during summer.

Potential dates for next meeting

Will proceed with Quarterly meetings. Next one will be in September