

Medina River Below Medina Diversion Lake Watershed Protection Plan Stakeholder Meeting

November 19, 2024 / 1:00 – 3:00pm

Braden Keller Community Center, Castroville, Tx

Agenda

- ✓ **Welcome and Overview**
- ✓ **Camp Bullis Sentinel Landscape RCPP**
 - Erin Davis, Texas A&M Natural Resources Institute
- ✓ **JBSA-Lackland Readiness & Environmental Program Integration (REPI) Program**
 - Richard King, JBSA 502 Air Base Wing Community Initiatives
- ✓ **San Antonio Edwards Aquifer Protection Program**
 - Phillip Covington, City of San Antonio
- ✓ **Review comments received Chapters 4-5**
- ✓ **Comments on Chapters 6-10**
- ✓ **Next Steps and Open Discussion**



Funding provided by the Texas State Soil and Water Conservation Board through a Clean Water Act Section 319(h) Grant from the U.S. Environmental Protection Agency.

Speaker Bios:

Erin Davis is a Project Specialist with the Texas A&M Natural Resources Institute. She comes from the Texas Forest Service, having worked in Kerrville and the surrounding counties with landowners on tree health and land management for 7 years. She's now working on the Camp Bullis Sentinel Landscape Regional Conservation Partnership Program.

Richard King retired from the Army after 30 years of service specializing in operations and strategic planning. Upon his retirement in 2014, he focused on encroachment management and community relations working toward compatible development around Joint Base San Antonio. He currently works at Joint Base San Antonio in the 502 Air Base Wing Community Initiatives office.

Phillip Covington is Manager of the City of San Antonio's Edwards Aquifer Protection Program (EAPP), which is responsible for protection of aquifer recharge quality and quantity through acquisition of property and conservation easements within the sensitive recharge and contributing zones of the Edwards Aquifer, which serves as San Antonio's primary source of drinking water. In this role, Mr. Covington is responsible for overseeing the acquisition and due diligence processes, coordinating City Council consideration of projects, management of the program budget, and monitoring of over 130 protected properties. To date, the EAPP has protected 185,000 acres located within the recharge and contributing zones of the Edwards Aquifer.

AGENDA:

- Introductions & Overview
- Education & Outreach Planning
- Implementation Planning

Erin Davis - NRI - Camp Bullis Sentinel Landscape RCPP

edavis@ag.tamu.edu

Highlights of Camp Bullis Sentinel Landscape

- Impacts to base mission
 - Encroachment/night time illumination
- Impacts to natural resources/wildlife implications
- Keep water on the landscape

Sentinel Landscape area includes upstream chunk of watershed around Medina Lake

NRI Leads RCPP for Camp Bullis

- 1.9 mill available for conservation easements
 - Application open, closes 11/21/24 though
 - Short 8-9 question application
 - Focus on protecting unique spaces
 - Emphasizing areas in close proximity to Bullis, on 3rd order or higher streams, karst features, contiguous to other protected lands
- 4 mill available for Land management conservation practices
 - Apps open in January 25
 - Approved NRCS practice funding that align with sentinel landscape
 - Cross fence, prescribed, grazing, riparian buffers, brush/wildlife mgmt, conservation planting
 - Uses NRCS cost sheets
 - Income requirements waived for RCPP
 - Different pool from EQIP
- Campbullisrcpp.nri.tamu.edu

Richard King - JBSA REPI Program

richard.king.44@us.af.mil

- His programs cover multiple JBSA installations
- Works with willing landowners and partner groups to buy easements and contribute cost share
 - Programs allow working lands to stay in the family and keep them working
- Lots of activity is reliant on word of mouth from program participants
 - If program worked for them, they tell others who become more willing to participate

Phillip Covington - City of San Antonio - Edwards Aquifer Protection Program

phillip.covington@sanantonio.gov

- San Antonio Conservation Advisory Board oversees program
 - Focused on contributing and recharge zones to conserve open space
 - Easements are perpetual that follow the land from then on

-
- Spent over \$325 mill on aquifer protection to date
 - Protected over 185k ac. to date
 - FY23 funding model changed
 - 10 yr, \$100 million
 - 95% of efforts to dates are conservation easements – to limit future impervious cover
 - 5% of protected properties are purchased
 - Program does require annual inspections to ensure that terms of agreement are being adhered to

Q: Does city have rights to develop on easement properties

A: No, not at all

Q: Does development limitations mean only impervious cover development?

A: Typically, yes. Those are all negotiable items that can be determined when developing easement agreement

- Easements typically result in 30-50% of fair market value for purchase of the easement
 - Landowner still owns and is able to use the land as defined in agreement
- Currently work with:
 - Green Spaces Alliance of South Texas
 - The Nature Conservancy
- Property Considerations are:
 - Proximity to water
 - Biological features on site
 - Property size - bigger is better
 - Location

Q: Does Geologic Assessment survey include looking for onsite water resources?

A: Yes, they are looking for any sort of karst or hydrogeologic features and will evaluate anything found: caves, sinkholes, springs, etc.

Q: what is done with land that is acquired, rather than through easement?

A: if adjacent to park/preserve, they are typically added to that space. If it is a significantly sensitive feature, then that property may be turned into a preserve of sorts - and will be taken off the tax rolls too

Q: is the fair market value mentioned today's value? What if property values go up significantly in several years?

A: Yes, but high growth area rates are considered too. Only a 1 time payment - no future payments if land value increases drastically.

Tina Hendon - Medina WPP update and discussion of comments

Overview of Project

Provided brief overview of planning process to date for new meeting attendees

- Meetings held to date
- Clarified for new meeting attendees that the goal of the WPP is to assist stakeholders in developing strategies and measures to reduce E. coli bacteria in streams sufficient to meet state water criteria

to support recreational activities such as swimming and wading. Clarified that the project does not include strategies or recommendations related to water supply or how water is used in the watershed.

- Backing up to explain context of WPP - lots of new folks here today for meeting
- Need to send out weblink for sure

- All 10 WPP chapters are on the website for review
 - Developed over course of stakeholder meetings and work group meetings held over last year
 - Appendices are the only thing that hasn't been discussed before
 - Full of equations for the load calculations and data assessments

Comments and Discussion

- Ch 1: Intro to watershed management
 - No comments
- Ch 2: Watershed characterization - what makes up the watershed: topography, soils, water resources, etc.
 - No comments
- Ch 3: Water quality - presentation of current/recent water quality in the watershed - water quality standards and how current measurements compare
 - No comments
- Ch 4: Potential sources of pollution - that are manageable: people based sources and land based sources

Q: was the discharge from the new Microsoft facility considered here?

A: No - its an industrial discharge and they're not typically considered as a potential source of E. coli.

That water is actually being routed through the Megan's Landing WWTF and contracted for re-use purposes, so is not being discharged from the Microsoft facility to any streams.

Q: For ag conservation easements, is stocking rate or animal numbers mandated?

A: No, but properties are evaluated by the easement holder for proper grazing management to meet the capacities of the specific property. No CAFOs are allowed though, just grazing under good resource management.

Point of clarification: ag valuations and conservation easements are considered differently for tax purposes; also consider proper stocking rates here too (ag valuation may have minimum requirements for animal numbers, conservation easements won't.)

- Ch 5: Pollutant source assessments - what are the current loads in stream and where are they likely to be coming from
 - No comments

- Ch 6: Recommended implementation strategies - locally agreed up voluntary management recommendations to restore water quality - address major manageable sources
 - Will add info on new rule for deer carcass disposal
 - Q: should deer carcasses be removed from roads/rivers if found?
 - A: No, due to potential for disease transmission to humans.

Q: will model ordinance language be included in the WPP? Not a central resource out there that can be recommended to smaller cities that are looking for guidance.

A: no, there won't be specific examples in the WPP, but we could point toward existing resources in the WPP.

- Point of clarification: Any references to Texas Forest Service should be abbreviated as TAMFS.

Q: is monitoring ongoing currently in the existing drought? Are those numbers relevant?

A: Yes, but monitoring is documented as being from drought conditions and those data are treated differently or not considered at all for assessments - determination is made by TCEQ

- Ch 7: Education & Outreach - education component tied to each implementation strategy. Also speaks to general information/education/outreach strategies implemented

Q: after WPP is completed, can presentations to existing groups be made to inform folks about plan & contents

A: Absolutely!

- Ch 8: Plan Implementation - schedule & goals for implementation, cost estimates, implementing parties, etc.
 - No comments
- Ch 9: Resources - Technical and Financial assistance resources available to stakeholders
 - No comments
- Ch 10: Measuring Success - how do we track incremental and ultimate success of WPP implementation
 - Water quality targets
 - Additional data collection needs
 - Data review & milestones
 - Adaptive management

Estimated Timeline

Now - Jan 25: incorporate stakeholder comments

Jan/Feb 25 - 30 day public review

Feb/Mar 25 - state agency review (TSSWCB & TCEQ)

- Next stakeholder meeting in February – potential date conflicts?
 - San Antonio LSR - most of February
 - 19-21 is Texas Ch. Wildlife Society - not big local impact, but agency
 - 17 is presidents day
 - Lucas out last week of February in Lubbock
- February meeting content will focus on more urban & suburban programs out there
 - SARA LID & Green Infrastructure; Developer Training; Nature Based Solutions in developing watersheds
 - Any other suggestions on Developer/City/County perspectives? Need contacts though.

Mar 2025 - WPP to EPA for their review and acceptance



Camp Bullis Sentinel Landscape

Regional Conservation Partnership Program



Erin Davis | Project Specialist
Texas A&M Natural Resources Institute



What is the Camp Bullis Sentinel Landscape Partnership?

Coalition of local partners to bring land stewardship and military readiness together to increase the long-term resilience of our natural resources

Challenges in the area include:

- Rapid growth and development in the Texas Hill Country and around Camp Bullis
- Increased light pollution
- Reduction in agricultural lands and wildlife habitat
- High demand on water supply
- Flooding and drought impacts



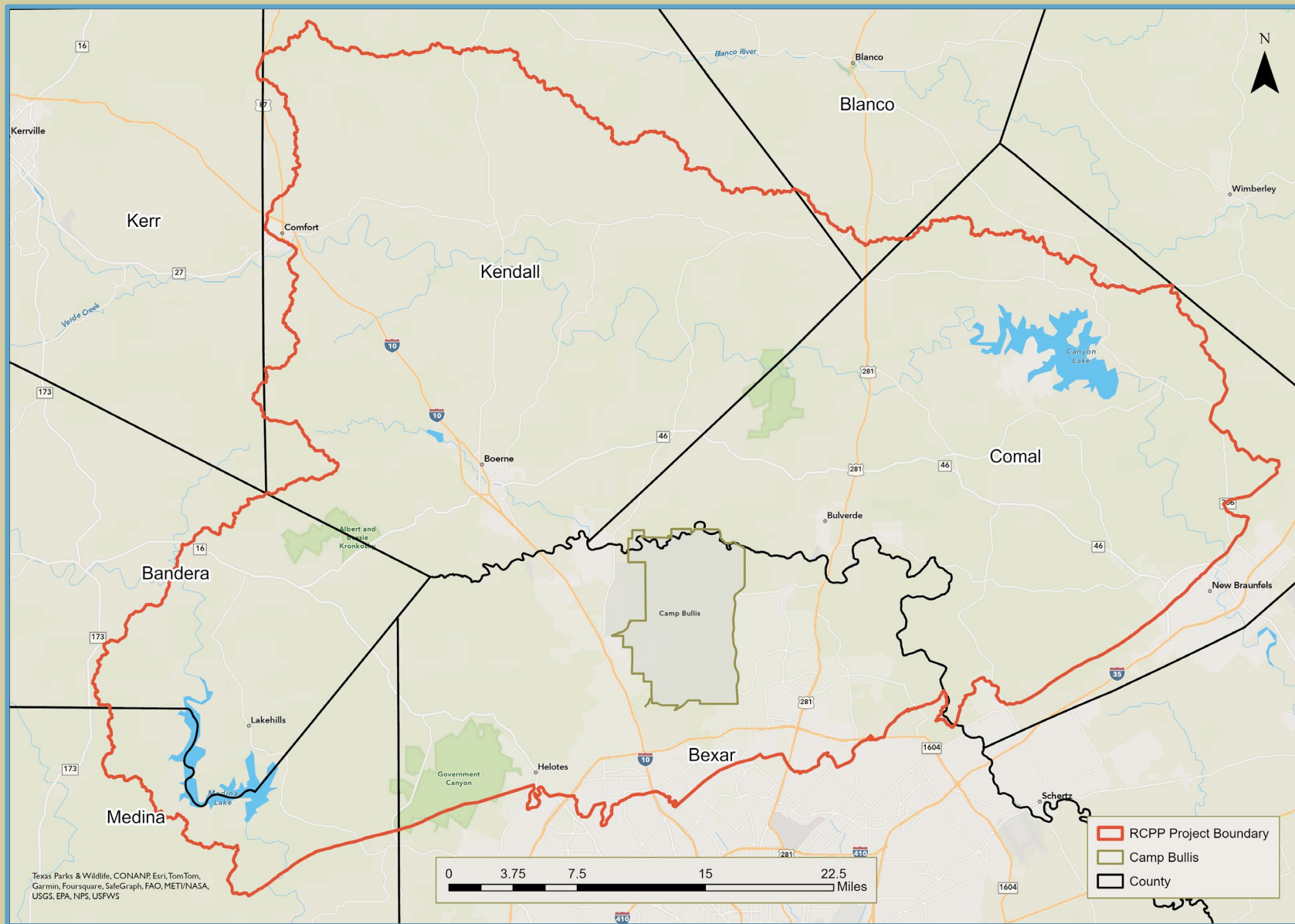


Goals

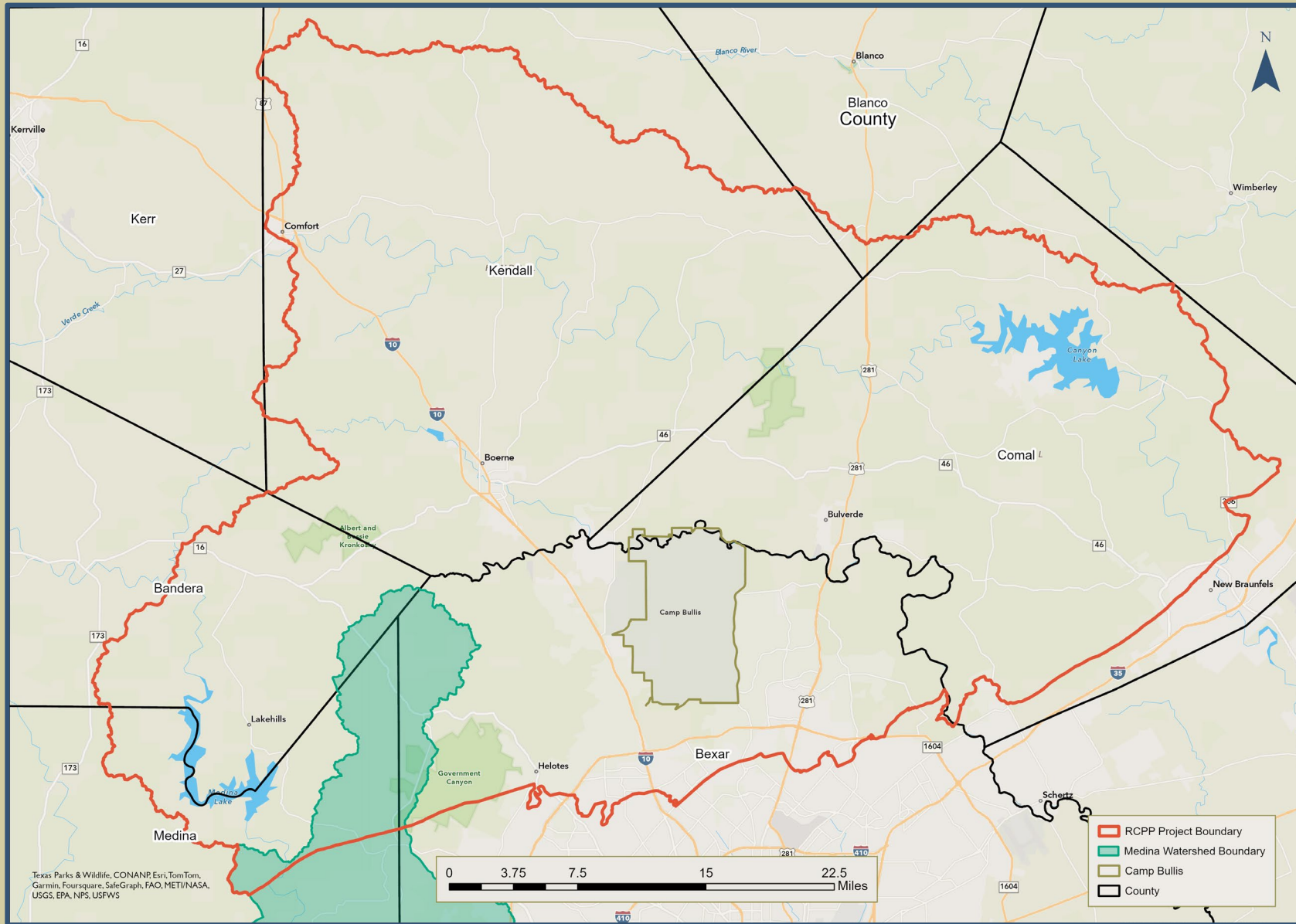
- Increase water quality and infiltration
- Support working lands (ranches)
- Enhance wildlife habitat
- Protect dark skies
- Protect natural resources as the region grows
- Mitigate wildfire risk
- Strengthen military readiness



Camp Bullis Sentinel Landscape Project Area



CBSL Project Area & Medina WPP Area



Regional Conservation Partnership Program

Partner-driven approach to conservation that funds solutions to natural resources challenges and is supported by the USDA - Natural Resources Conservation Service



Camp Bullis RCPP Project Partners



GREEN
SPACES
ALLIANCE
OF SOUTH TEXAS



hill country alliance



Greater
Edwards
Aquifer
Alliance



Conservation Easements

- Funding: \$1.9 million available
- Pre-application closes Thursday, November 21
- Seeking to preserve properties with voluntary landowners for natural resource protection in proximity to Camp Bullis
- Agriculture, wildlife habitat, and open spaces are compatible land uses that protect the mission and training capabilities of Joint Base San Antonio – Camp Bullis.
- Emphasis on proximity to Camp Bullis, waterways, contiguity to other protected lands, and karst features.



Land Management Conservation Practices

- \$4 million available with 4 years left of project
- Applications will open in January 2025
- **Funding for landowners** toward program-approved NRCS-practices that align with the Sentinel Landscape's goals to restore native plant communities and improve riparian systems.



Learn more at:

CampBullisRCPP.nri.tamu.edu

Erin Davis

edavis@ag.tamu.edu

830-510-3533





Untamed, Unrivaled



502d Air Base Wing & Joint Base San Antonio Readiness and Environmental Protection Integration (REPI) Overview



Mr. Richard King
502 ABW / Community Mission Integration



What is REPI



Untamed, Unrivaled

Readiness and Environmental Protection Integration (REPI)

- Administered by the Office of the Secretary of Defense (OSD)
- Key tool for combating encroachment that can limit or restrict military training
- Protects military missions by helping remove or avoid land-use conflicts near installations and addressing regulatory restrictions that inhibit military activities

How it works

- REPI uses of buffer partnerships among the Military Services, private conservation groups, and state and local governments, authorized by Congress at 10 U.S.C. § 2684a.
- These win-win partnerships share the cost of acquisition of easements or other interests in land from **willing sellers**
- Preserve compatible land uses and natural habitats near installations and ranges that helps sustain critical, at-risk military mission capabilities.



JBSA-Lackland

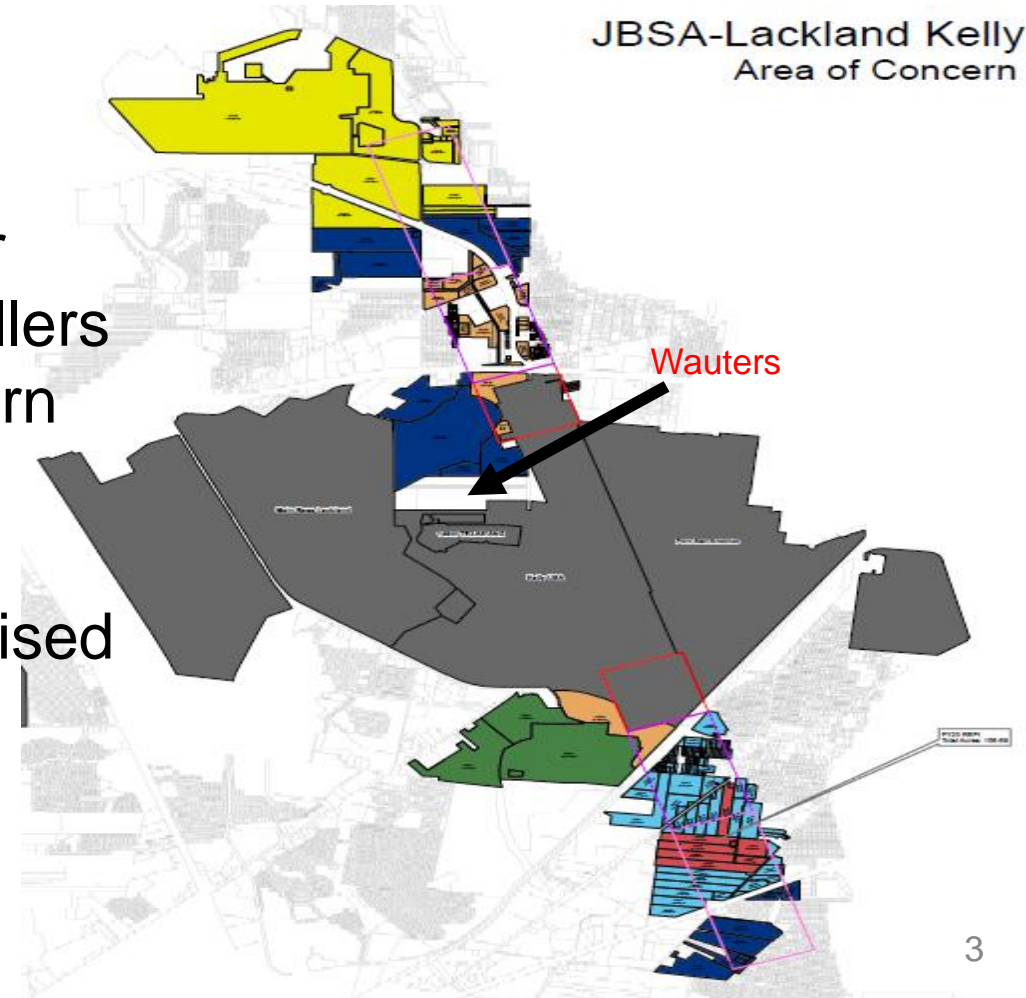


Untamed, Unrived

JBSA-Lackland REPI Project

■ Green Spaces Alliance (GSA) Engagements

- Working with San Antonio River Authority for leads on willing sellers along Leon Creek in the southern APZs
- Wauters parcel has been appraised and working Phase II ESA for underground fuel tank



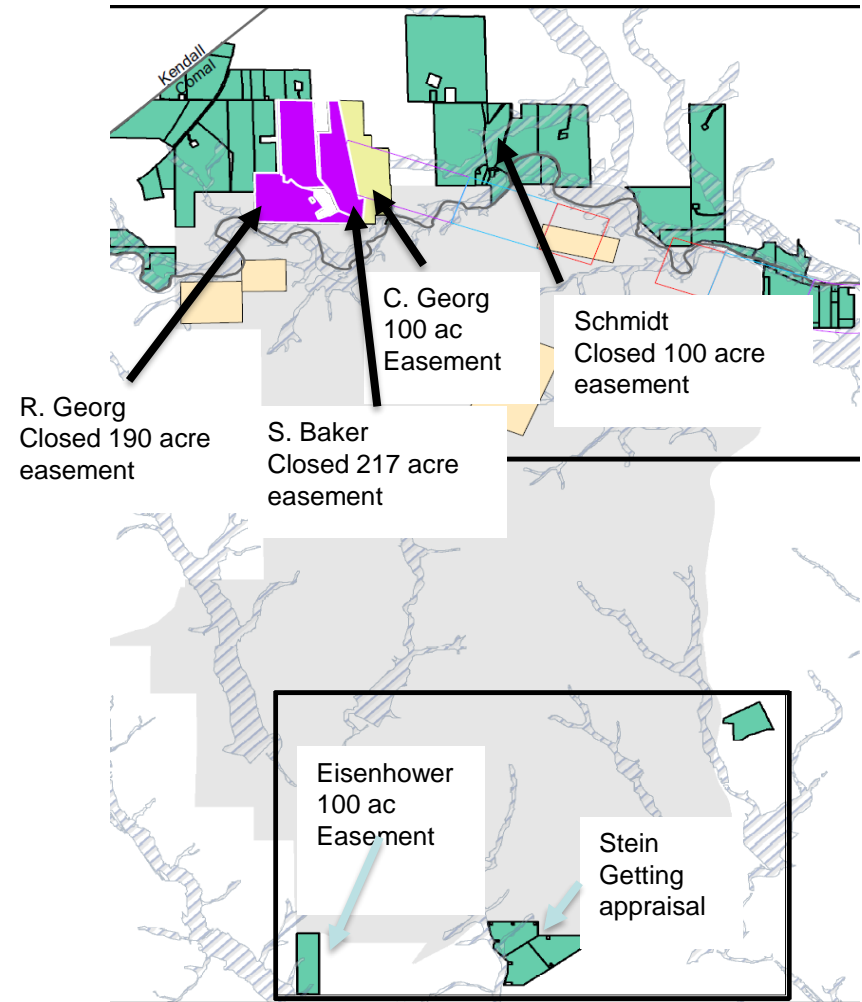


JBSA-Camp Bullis REPI Project



Untamed, Unrivalled

- **Compatible Lands Foundation Transactions**
 - R.Georg (Closed 190 acre easement)
 - S. Baker (Closed 217 acre easement)
 - Schmidt (Closed 100 acre easement)
- REPI Challenge partnered with Edwards Aquifer Protection Program on Scenic Loop (Closed 156 acre easement)
- FY 25 REPI Challenge with San Antonio River Authority to study flood mitigation upstream on Cibolo Creek



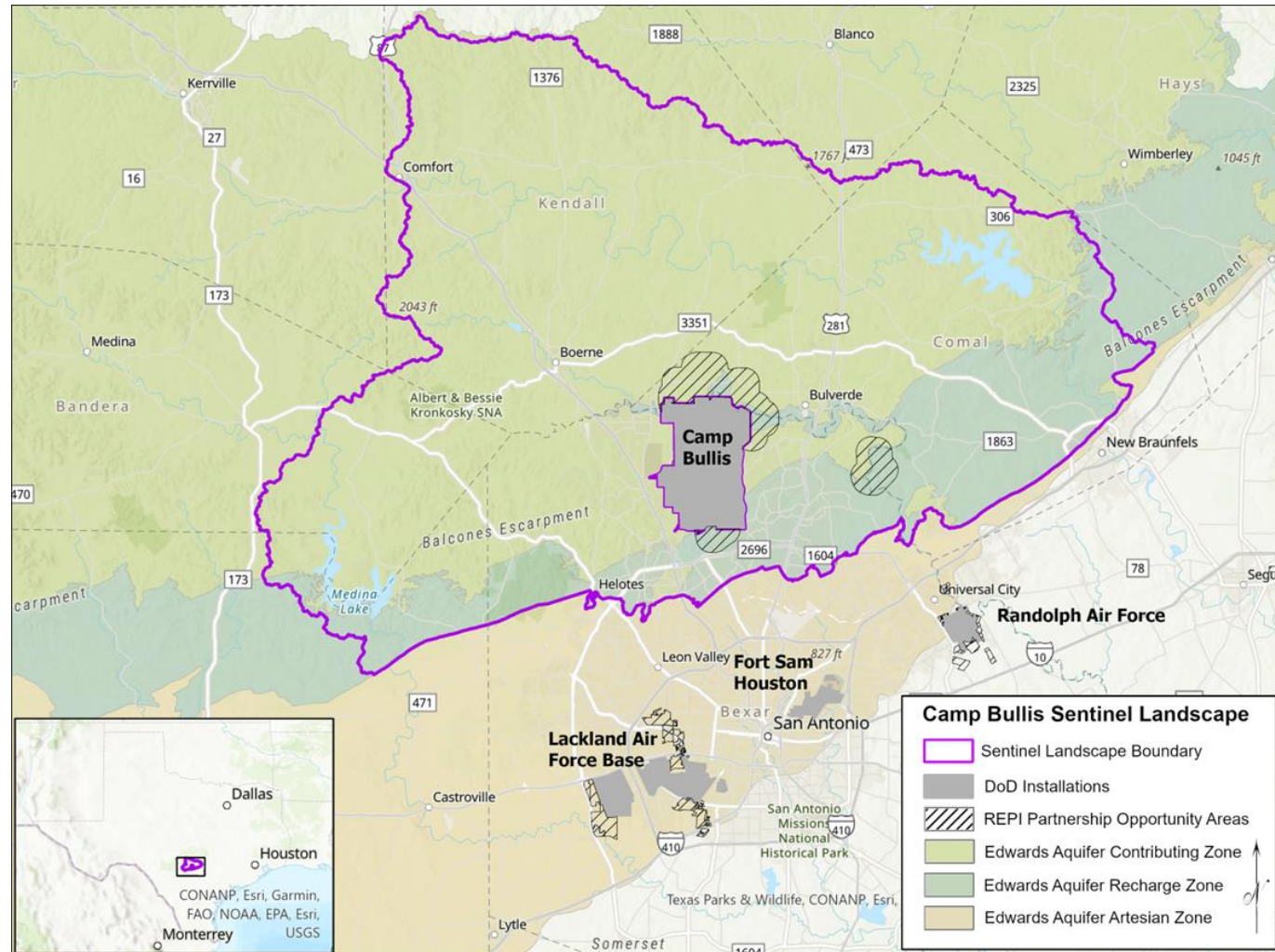


Camp Bullis Sentinel Landscape



Untamed, Unrivalled

Program managed by:
Department of Agriculture (USDA)
Department of Defense (DoD)
Department of the Interior (DOI)



Sources: REPI, EAA, AACOG



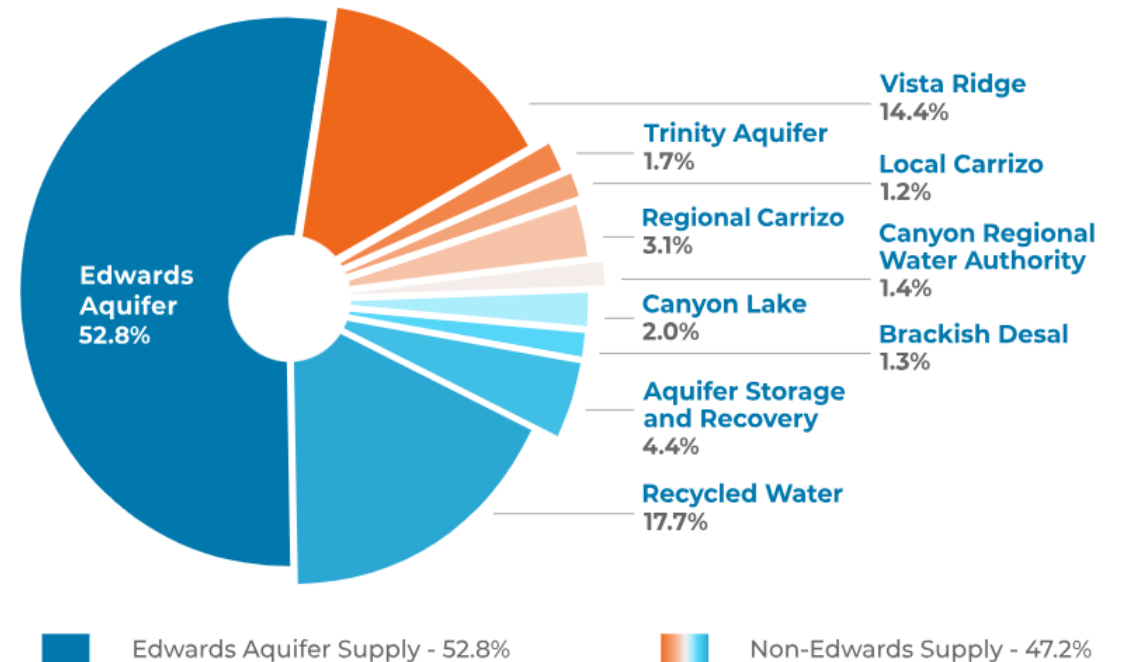
Edwards Aquifer Protection Program

San Antonio's Conservation Success Story

Presented by:
Phillip Covington, Special Projects Manager

Program Background

- Edwards Aquifer is the City's primary source of drinking water
- In the 1970s, interested stakeholders began campaigning to protect the Edwards Aquifer
- Purpose of the Edwards Aquifer Protection Program (EAPP) is to protect the quality and quantity of water recharging into the Edwards Aquifer
 - Land acquisition
 - Conservation easements
- EAPP activities are overseen by Conservation Advisory Board (CAB)



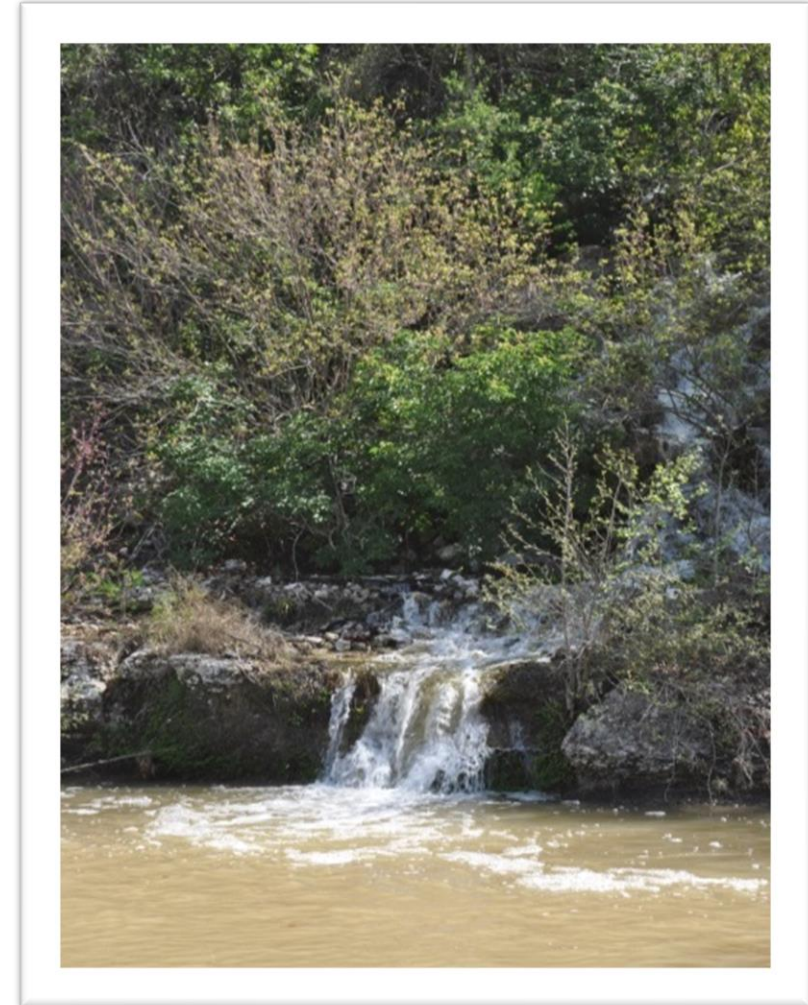
Graphic: saws.org

Conservation Advisory Board (CAB)



CAB consists of representatives from the following:

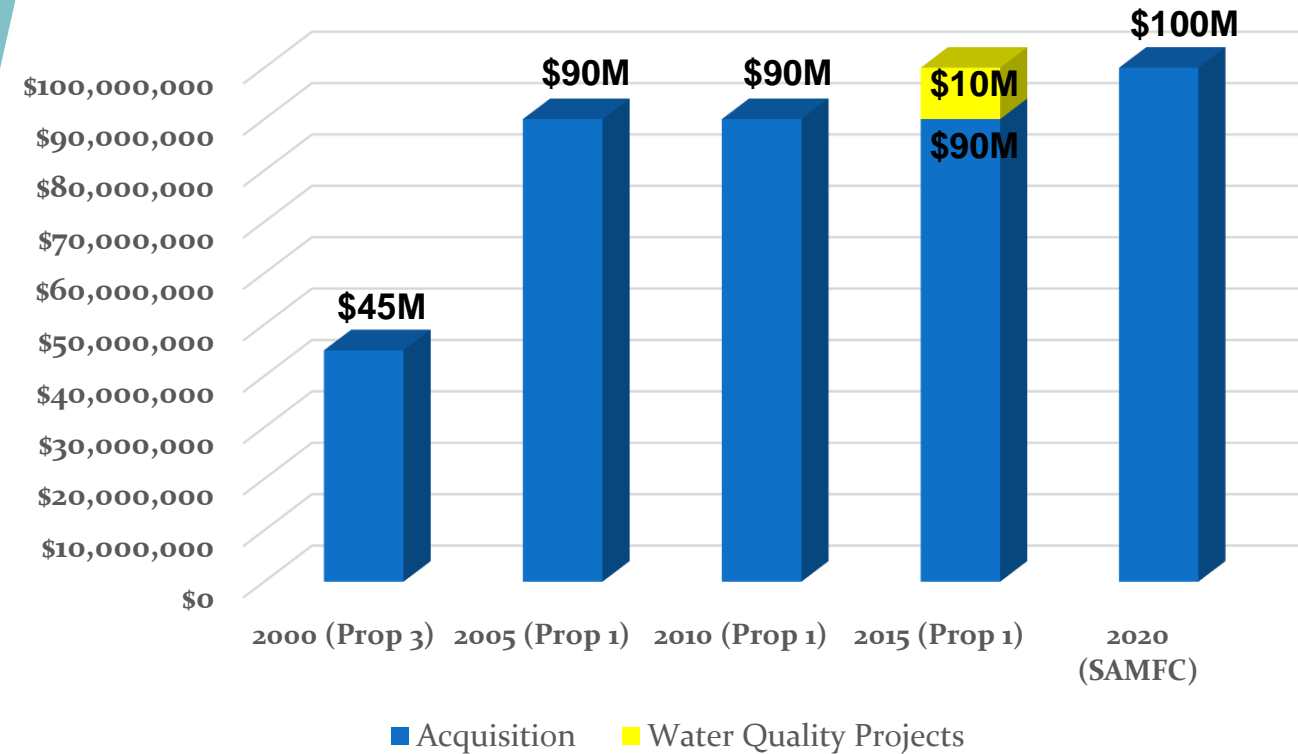
- COSA Parks and Recreation Director
- COSA Parks Advisory Board
- Edwards Aquifer Authority (EAA)
- San Antonio Economic Development Foundation
- San Antonio River Authority (SARA)
- San Antonio Water System (SAWS)
- Texas Parks and Wildlife Department
- Medina County
- Uvalde County





Approved Funding Programs

- New 10 year, \$100M funding program thru SA Municipal Facilities Corporation (SAMFC) approved by City Council in Sept 2020
 - Commenced in late FY 2023
 - No changes in program administration

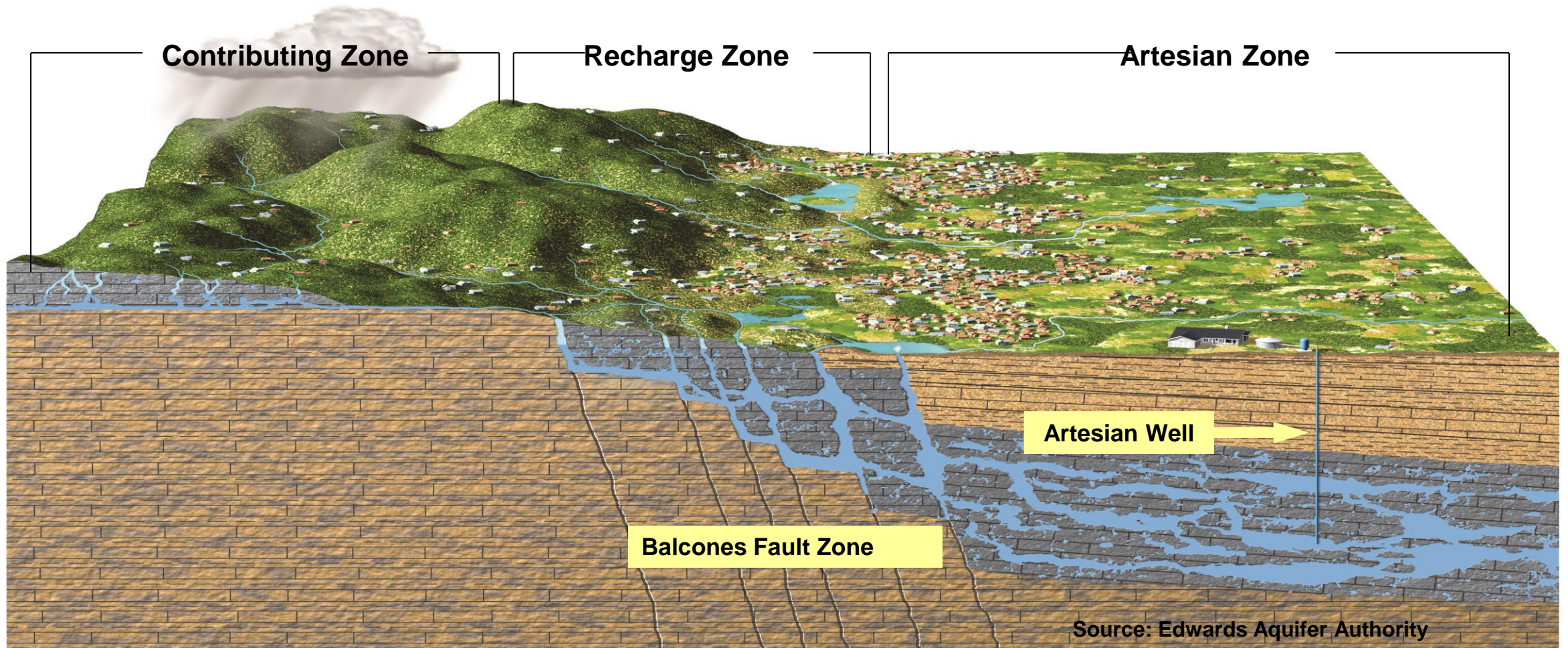


About the Edwards Aquifer

- The Edwards is a *karst* aquifer – meaning it is made up of porous, soluble limestone rock which allows water to flow through it like a system of underground streams and channels
- The aquifer naturally regenerates when water flows through specific zones via an elaborate network of recharge features such as fractures, fissures and sinkholes



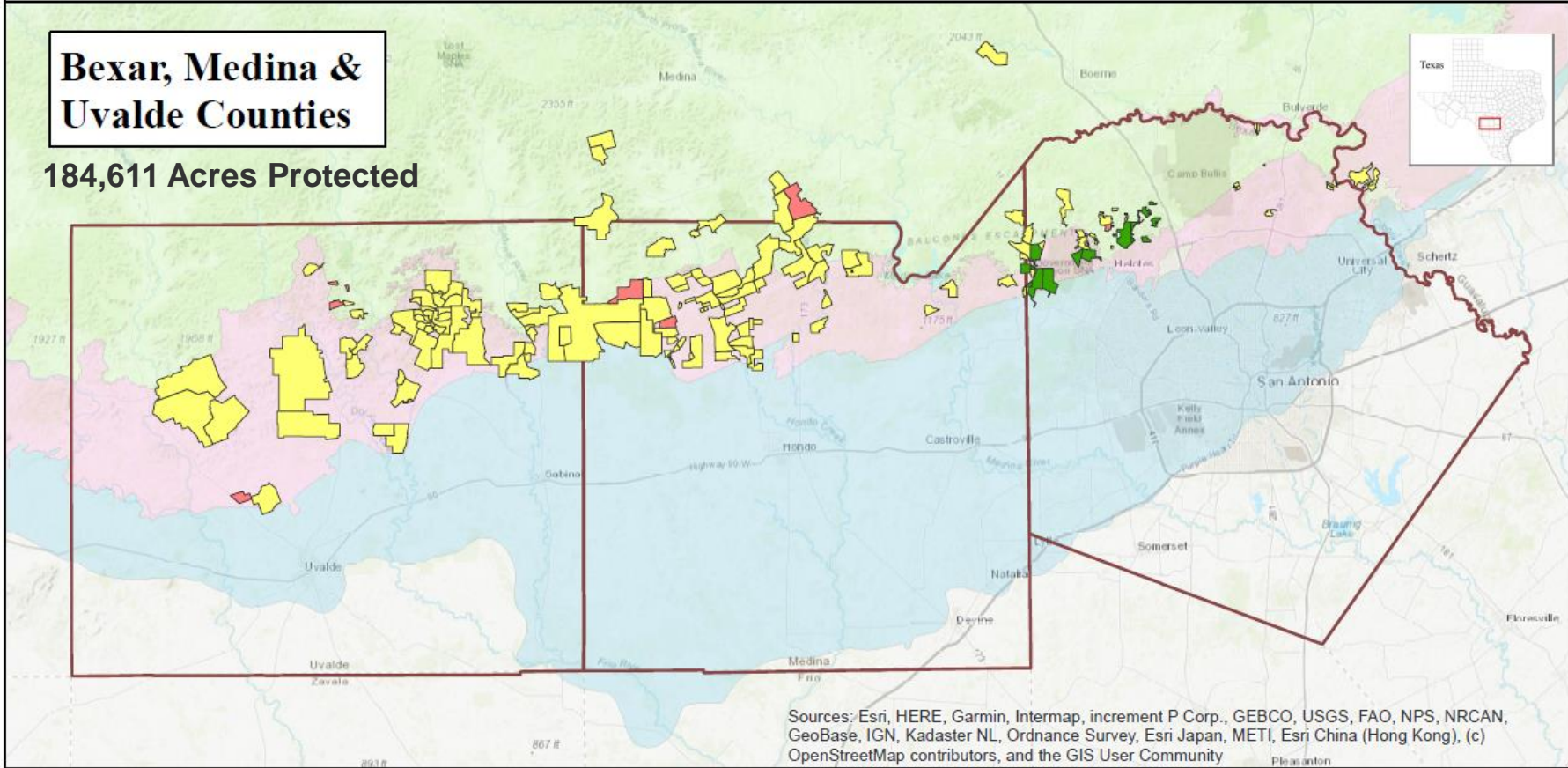
Generalized Cross Section of the Aquifer



Source: Edwards Aquifer Authority

Bexar, Medina & Uvalde Counties

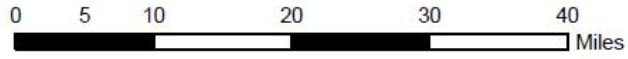
184,611 Acres Protected



Sources: Esri, HERE, Garmin, Intermap, increment P Corp., GEBCO, USGS, FAO, NPS, NRCAN, GeoBase, IGN, Kadaster NL, Ordnance Survey, Esri Japan, METI, Esri China (Hong Kong), (c) OpenStreetMap contributors, and the GIS User Community

- Proposition 3 Properties
- Proposition 1 Properties
- SAMFC
- Edwards Aquifer Contributing Zone
- Edwards Aquifer Recharge Zone
- Edwards Aquifer Artesian Zone

*San Antonio Municipal Facilities Corporation

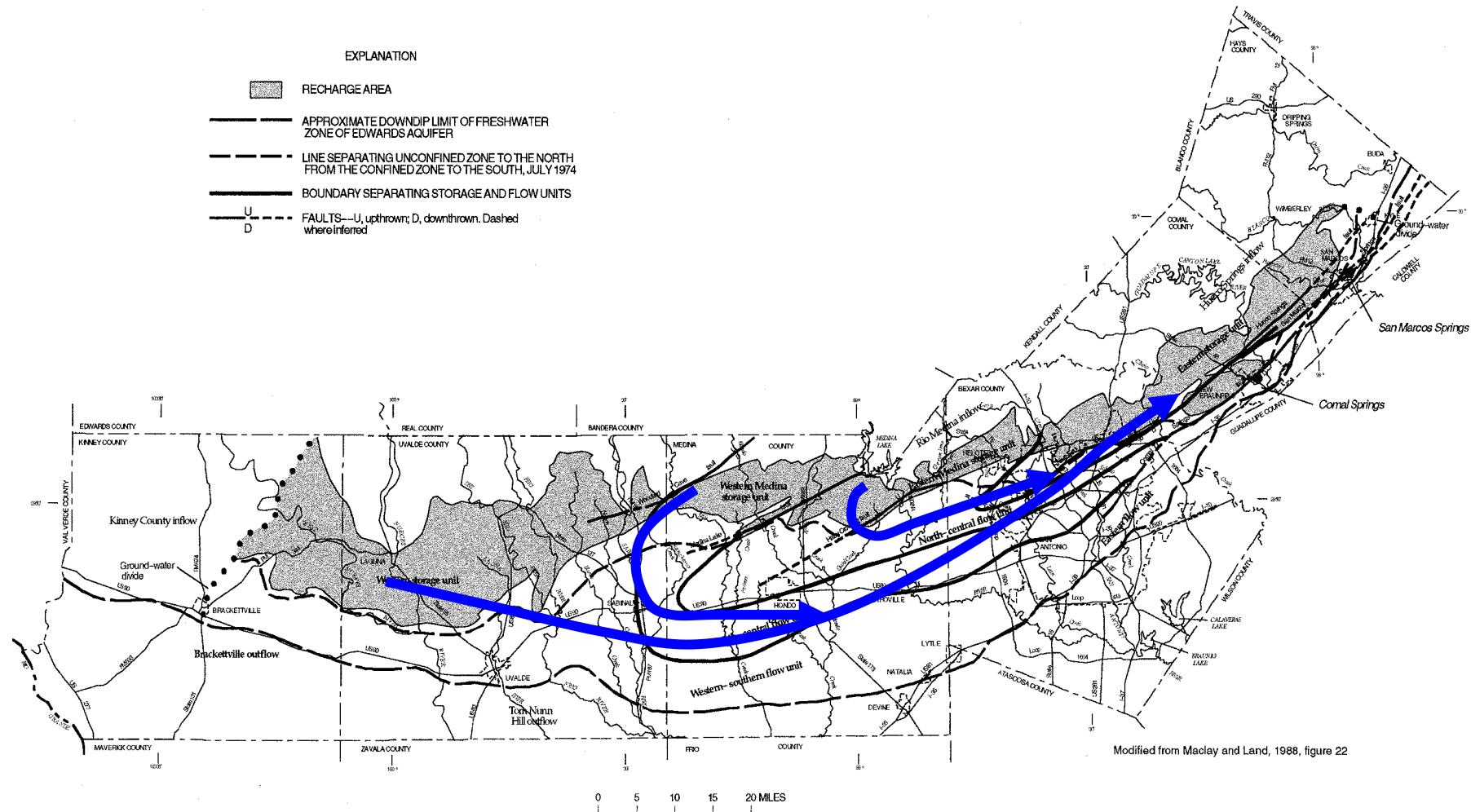


THE CITY OF SAN ANTONIO MAKES NO WARRANTY, REPRESENTATION, OR GUARANTEE OF ANY KIND REGARDING THIS MAP OR INFORMATION PROVIDED HEREIN.

The City of San Antonio assumes no liability either for any errors, omissions, or inaccuracies in the information provided regardless of the cause of such or for any decision made, action taken, or action not taken by the user in reliance upon any maps or information provided.

Aquifer Flow Patterns

General Flow is West to East



Conservation Easements vs. Fee Simple Acquisition



- EAPP is a voluntary conservation program; Conservation Easements are perpetual once acquired
- 95% of property interests acquired by EAPP are conservation easements; 5% Fee Simple acquisitions
- Landowners retain ownership and certain land use rights, **but give up future development rights**
 - Limited to ½ of 1% of total square footage for future development
- City secures development rights of protected acreage
- All acquired properties are monitored on an annual basis by City and Edwards Aquifer Authority (EAA) staff under an Interlocal Agreement



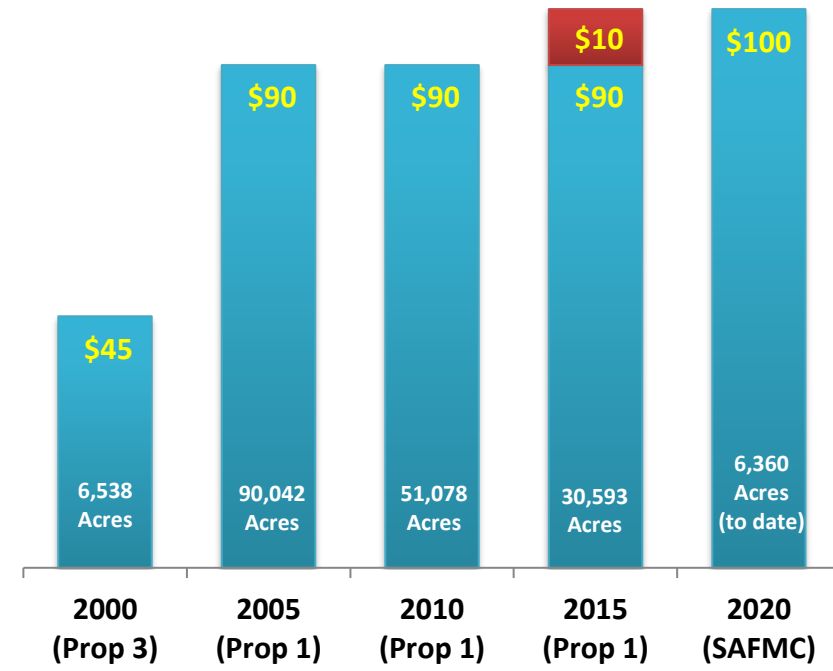
Conservation Easements

- Standard language on aquifer protection is used in each conservation easement; however, some landowners request certain provisions. These are negotiated on a case-by-case basis.
- Negotiations typically last 9 months to a year.
- Once the conservation easement has been recorded, it is a legal binding agreement that cannot be changed and lasts into perpetuity.
- Landowner is compensated 30 – 50% of fair market value as established by appraisal. One-time cash payment issued at closing.



Program Accomplishments 2000-Present

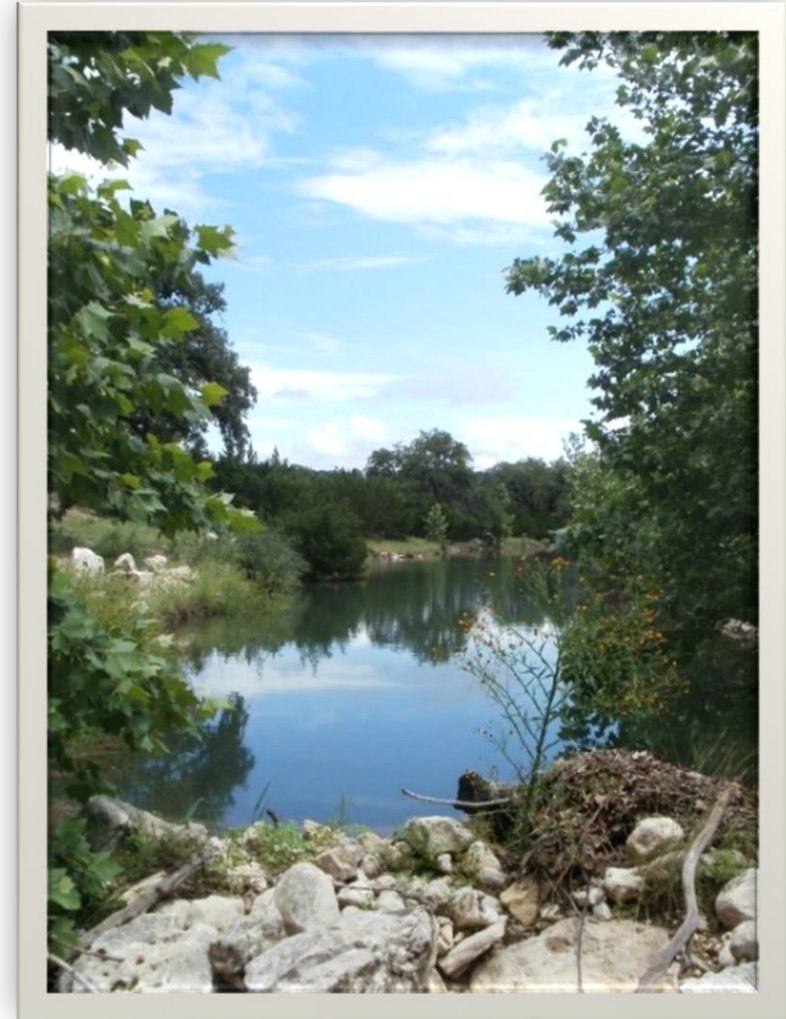
- Acquired: 132 conservation easements and 24 fee simple projects
- Protected: 184,611 acres
- Committed: \$335 million



Method	Acreage Protected	
CE	176,715	95.72%
Fee	7,896	4.28%
Total	184,611	

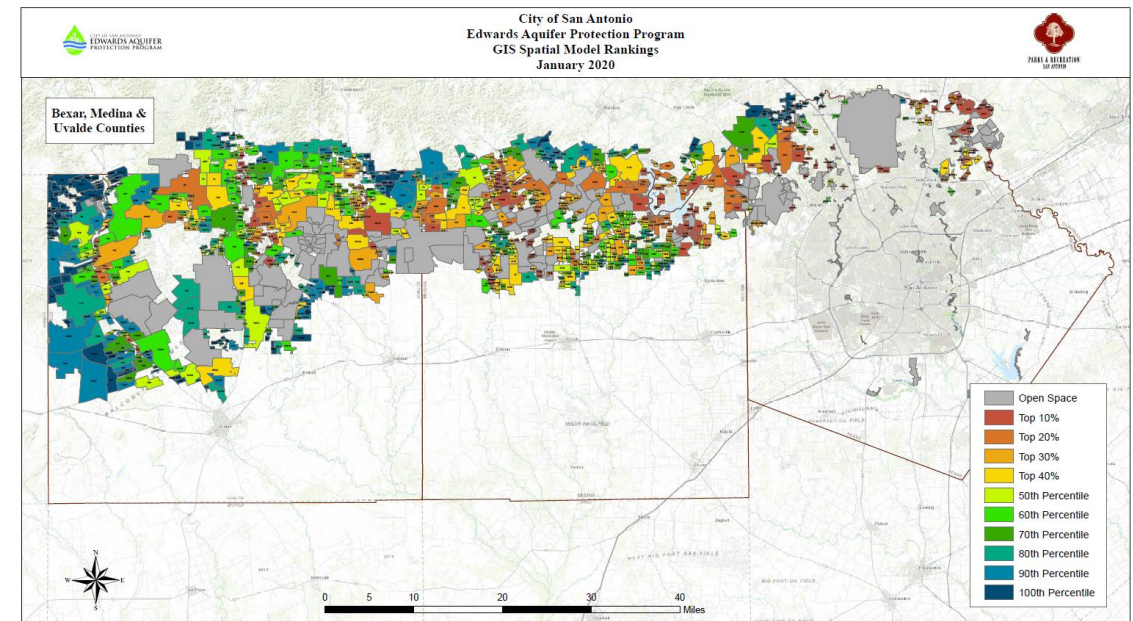
Land Identification & Acquisition

- To assist the EAPP with land identification and acquisition, two groups were established:
- Scientific Evaluation Team (SET)
 - SET is a science-based advisory group responsible for determining the weighting matrix for the GIS spatial model used to rank properties
- Land Acquisition Team (LAT)
 - In addition to City EAPP staff, the LAT is comprised of two non-profit conservation organizations which report to the Conservation Advisory Board (CAB) on availability of property based upon CAB and City directives
 - LAT members assist with negotiation of acquisitions and help coordinate due diligence necessary for each property
- LAT members are:
 - Green Spaces Alliance of South Texas
 - The Nature Conservancy



Scientific Evaluation Team (SET)

- SET is a science-based advisory group responsible for determining the weighting matrix for the GIS spatial model used to rank properties based on:
 - *Water Resources*
 - *Biology*
 - *Property Size*
 - *Location*
- Members include:
 - *COSA Parks & Recreation Department*
 - *Edwards Aquifer Authority*
 - *US Department of Agriculture*
 - *San Antonio River Authority*
 - *San Antonio Water System*
 - *Texas Parks & Wildlife Department*
 - *US Fish & Wildlife Service*
 - *US Geological Survey*
 - *Southwest Research Institute*



EAPP Property Evaluation Process



PROPERTY MODELING & RANKING

GIS model ranks properties based on geological features, such as size and location



BOARD REVIEW

Conservation Advisory Board (CAB) considers properties



STAGE (1) DUE DILIGENCE

Geological assessment and property appraisal



STAGE (2) DUE DILIGENCE

Phase 1 Environmental Site Assessment completed and property negotiations



FINAL APPROVAL

Final CAB approval & City Council consideration

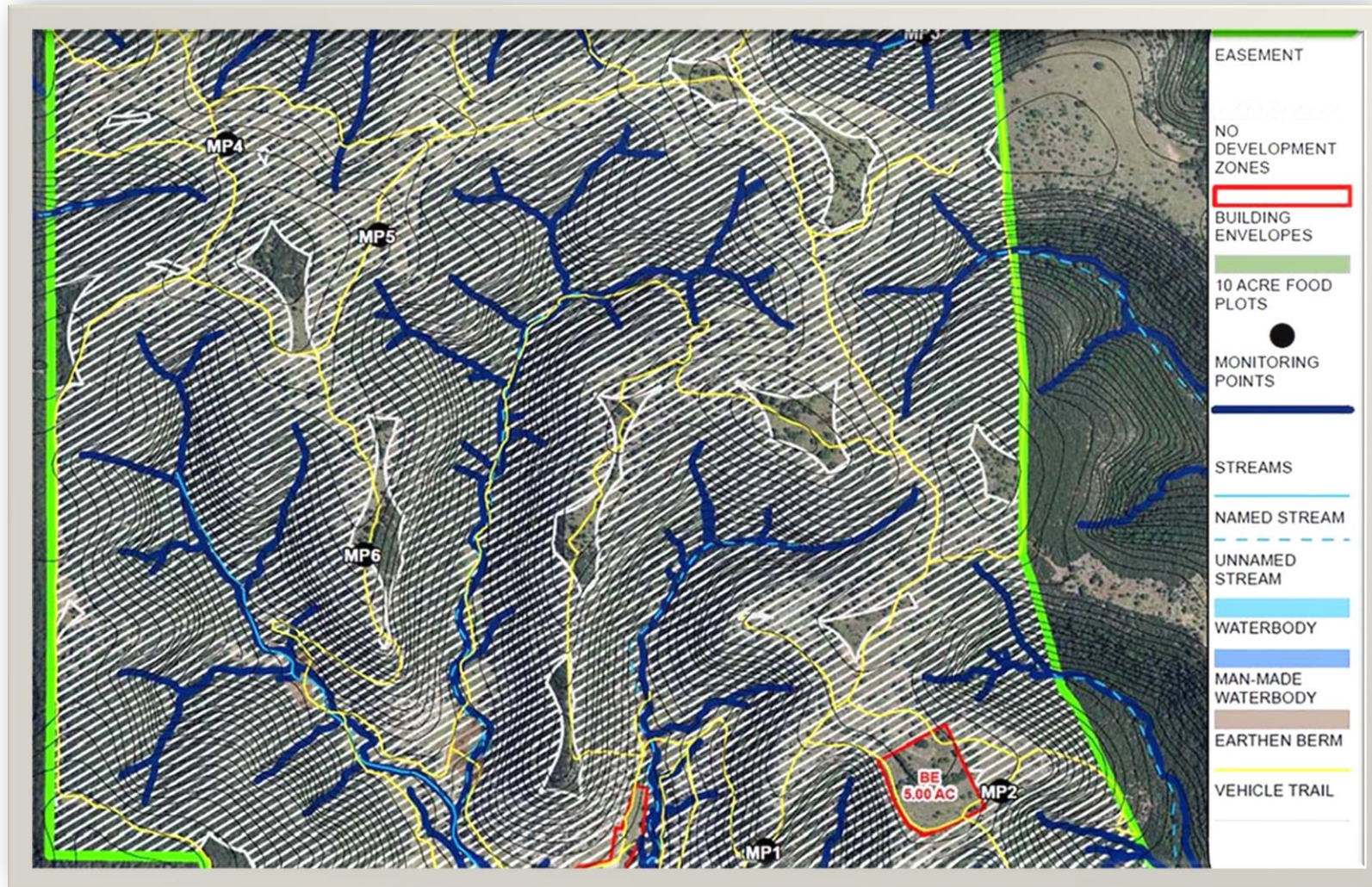
Water Quality Projects

- 2015 Election: \$10M dedicated for water quality projects in urbanized areas of Bexar County
- Interlocal Agreement with San Antonio River Authority for project management
- Qualifying Projects:
 - Must be located over the recharge and contributing zones in Bexar County
 - Seek to improve water quality in areas that do not meet or exceed current TCEQ standards
- \$10M committed to date for 11 projects & SARA ILA
- Completion of all projects anticipated by Spring 2026
- <https://www.sapropiedwardsprojects.org/>

Leveraging Funds

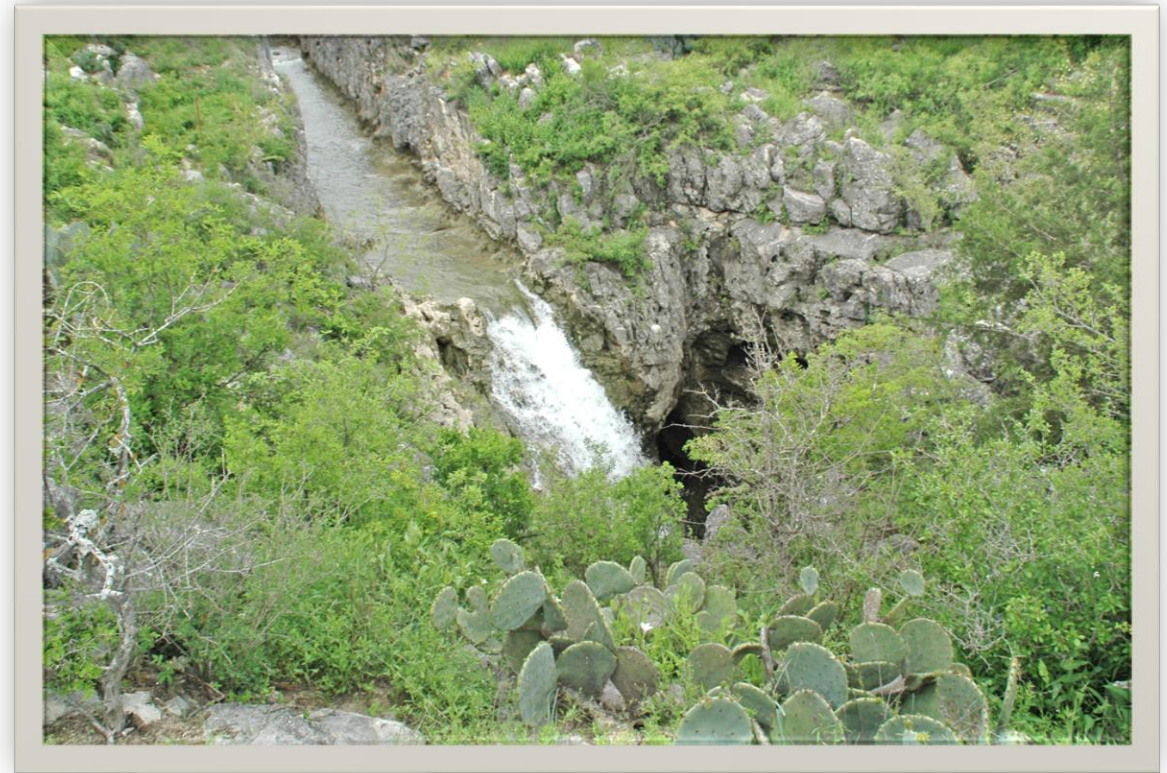


Negotiation Uh-Oh Moments



EAPP Strategies

- ✓ Continue to target properties over the sensitive Recharge and Contributing Zones in accordance with program funding
- ✓ Emphasize important watersheds
- ✓ Work to connect existing protected lands – fill in the gaps

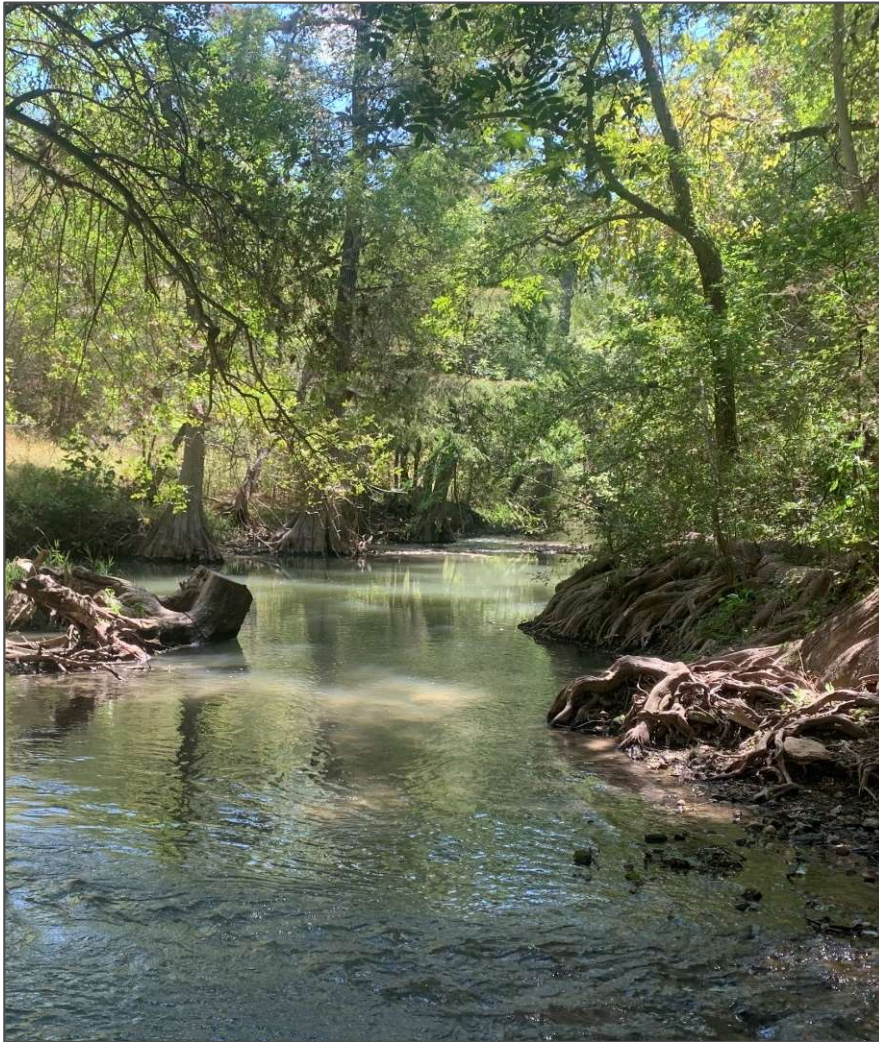




Thank You

Phillip.Covington@sanantonio.gov

Office: (210) 207-3003



Medina River Watershed Protection Plan

Medina River Below Diversion Dam

Watershed Protection Plan Stakeholder Meeting

St. Louis Braden Keller Community Center, Castroville
November 19, 2024

Tina Hendon, Program Specialist
Lucas Gregory, Associate Director
Texas A&M AgriLife, Texas Water Resources Institute



Welcome!

Introductions & Overview

Camp Bullis Sentinel Landscape RCPP

Erin Davis, Texas A&M Natural Resources Institute

JBSA-Lackland REPI Program

Richard King, Joint Base San Antonio

San Antonio Edwards Aquifer Protection Program

Phillip Covington, City of San Antonio

Discuss comments on Chapters 4-10

Next Steps and Open Discussion

Potential dates for February meeting

Land Conservation and Management Programs

Camp Bullis Sentinel Landscape RCPP

Erin Davis, Texas A&M Natural Resources Institute

JBSA-Lackland REPI Program

Richard King, Joint Base San Antonio

San Antonio Edwards Aquifer Protection Program

Phillip Covington, City of San Antonio

Comments on WPP Chapters?

Chapter 1 - 3

Chapter 1 Introduction to Watershed Management

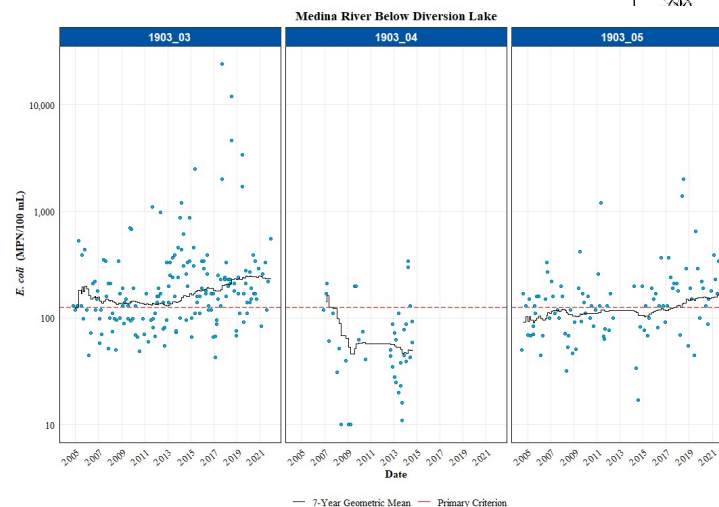
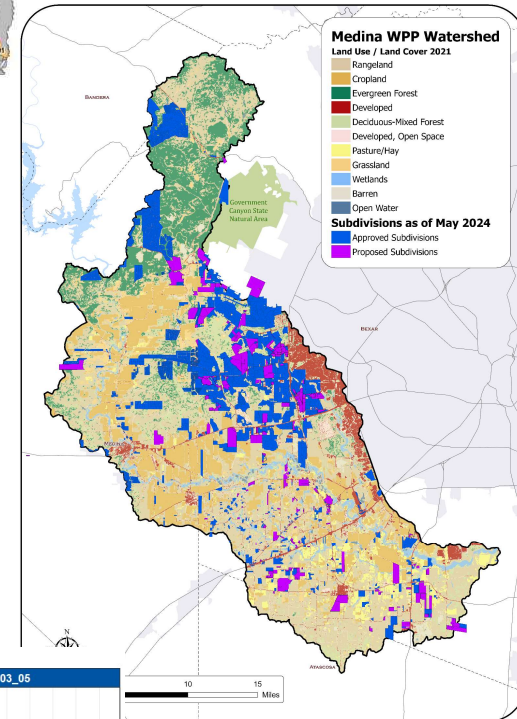
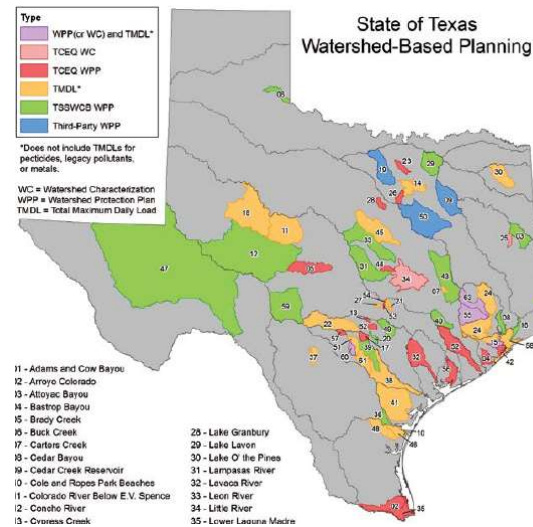
- The Watershed Approach
- The Medina River below Medina Diversion Lake WPP

Chapter 2 Watershed Characterization

- Physical Characteristics.....
 - Topography.....
 - Soils
- Land Use and Land Cover
- Ecoregions.....
- Climate
- Surface Water Resources.....
 - Medina River.....
 - Polecat Creek.....
 - Medio Creek.....
 - Sub-watersheds.....
- Groundwater Resources.....
- Water Resource Management.....
- Population and Demographics.....

Chapter 3 Water Quality

- Water Body Assessments
- Texas Surface Water Quality Standards
- Bacteria
- Dissolved Oxygen.....
- Nutrients.....
- Flow



Chapters 4 & 5

CHAPTER 4 POTENTIAL SOURCES

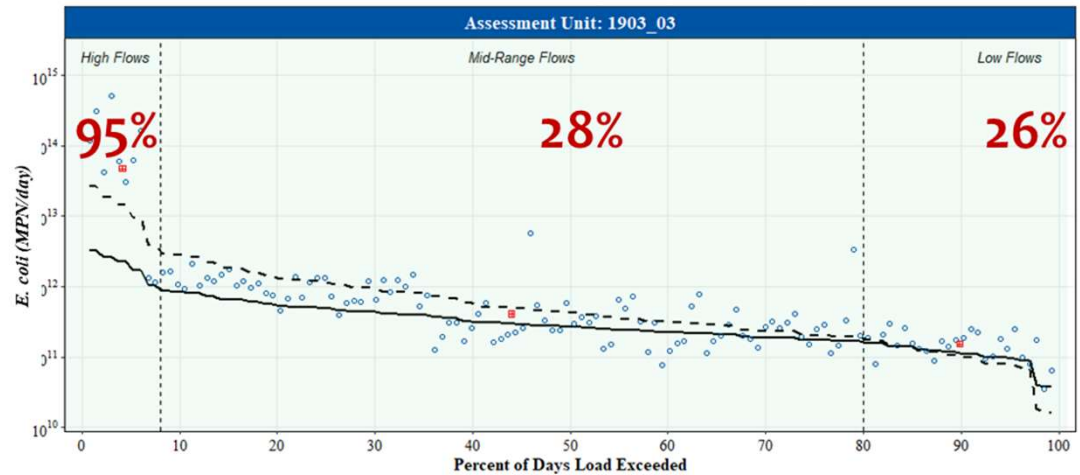
- WASTEWATER TREATMENT FACILITIES (WWTF)
- SANITARY SEWER OVERFLOWS (SSO)
- ON-SITE SEWAGE FACILITIES (OSSF).....
- PET WASTE
- URBAN STORMWATER
- LIVESTOCK.....
- DEER.....
- FERAL HOGS.....
- ILLEGAL DUMPING
- REFERENCES.....



CHAPTER 5 POLLUTANT SOURCE ASSESSMENT.

- LOAD DURATION CURVE ANALYSIS
- Station 12814*.....
- Station 12916*.....
- SPATIAL ANALYSIS OF POTENTIAL E. COLI LOADING
- REFERENCES.....

Medina River Below Diversion Lake; Dec. 1, 2015 - Nov. 30, 2022



Chapters 6 & 7

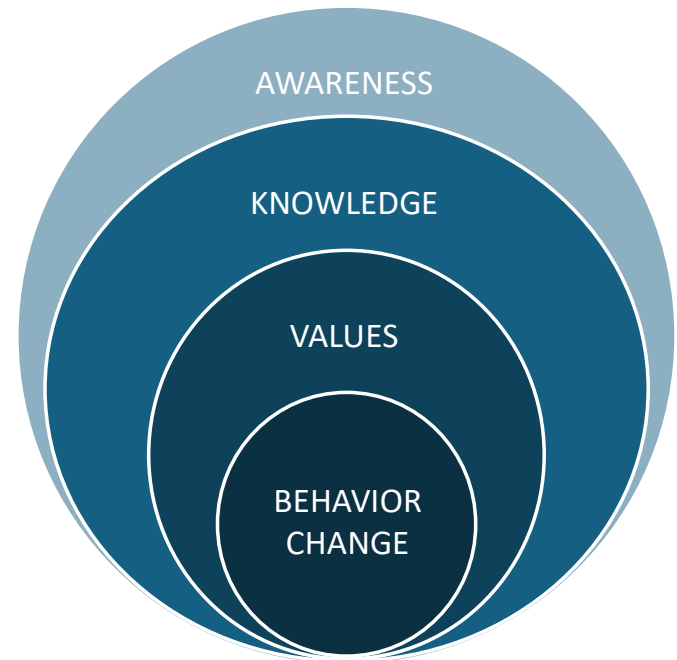
Chapter 6 Recommended Implementation Strategies

- Reduce SSOs and Unauthorized Discharges.....
- Address Failing On-Site Sewage Systems
- Manage Pet Waste
- Manage Stormwater Runoff.....
- Implement Water Quality Management Plans and Conservation Plans.
- Reduce Feral Hog Population
- Reduce Illicit Dumping.....
- Restore Degraded Streams and Riparian Areas
- Conserve Land
- Management Measure – Manage Abandoned Wells



Chapter 7 Education and Outreach

- Watershed Coordinator
- General Outreach
- Public Stakeholder Meetings
- Future Stakeholder Engagement
- Events and Opportunities
- Newsletters and News Releases
- Targeted Educational and Outreach Programs
- On-Site Sewage Facilities
- Pet Waste.....
- Stormwater Management.....
- Agricultural Operations and Land Management.....
- Feral Hogs and Wildlife



Chapters 8 & 9

Chapter 8: Plan Implementation.....

Chapter 9: Resources.....

Technical Assistance

County or City Designated Representatives

Edwards Aquifer Authority.....

Natural Resources Conservation Service

Private Firms.....

San Antonio River Authority

San Antonio Water System.....

Soil and Water Conservation Boards

Texas A&M AgriLife Extension.....

Texas Commission on Environmental Quality.....

Texas Parks and Wildlife Department.....

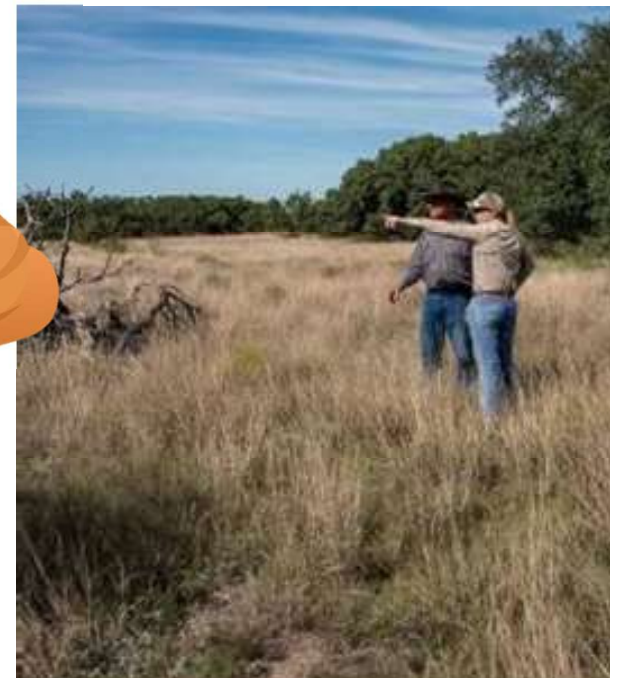
Texas State Soil and Water Conservation Board

Financial Resources

Federal Sources.....

State Sources

Management Measure	Participation	Estimated Unit Cost
OSSF MANAGEMENT		
Identify, inspect, and address 600 failing OSSFs repair, rehabilitation, or replacement	Counties, service providers, homeowners	\$8,000 - \$12,000
Evaluate feasibility of connecting to existing or planned infrastructure	Counties, municipalities, homeowners	---
Develop and deliver materials (postcards, websites, handouts, etc.) to educate homeowners	AgriLife Extension, TWRI, Watershed Coordinator	---
Operate an OSSF education, outreach, and training program for installers, service providers and homeowners	AgriLife Extension, TWRI, Watershed Coordinator, Counties	\$4,000



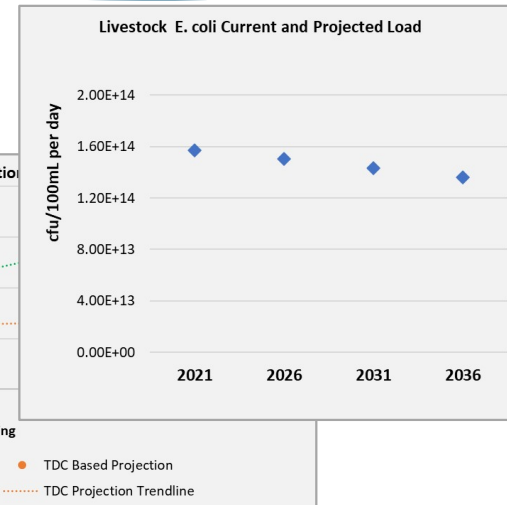
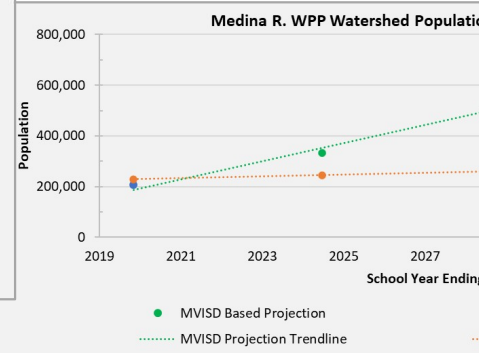
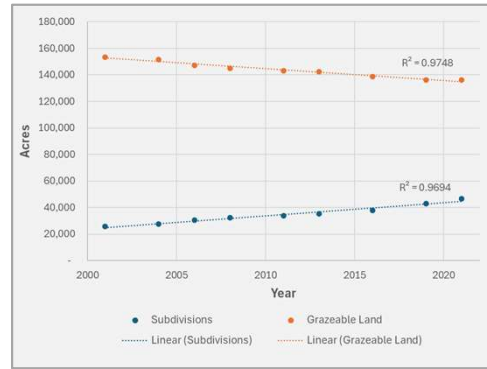
Chapter 10

Chapter 10: Measuring Success.....	10-1
Water Quality Targets	10-1
Additional Data Collection Needs	10-2
Data Review.....	10-2
Interim Measurable Milestones	10-3
Adaptive Management.....	10-3
References.....	10-4

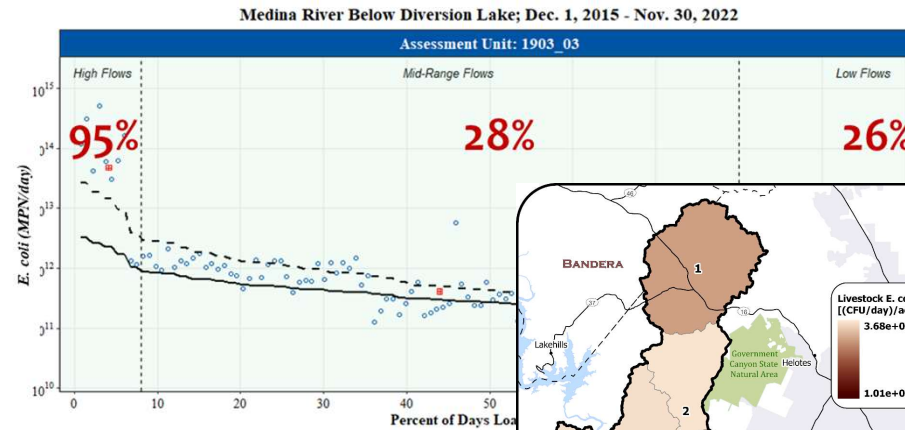


Technical Appendices

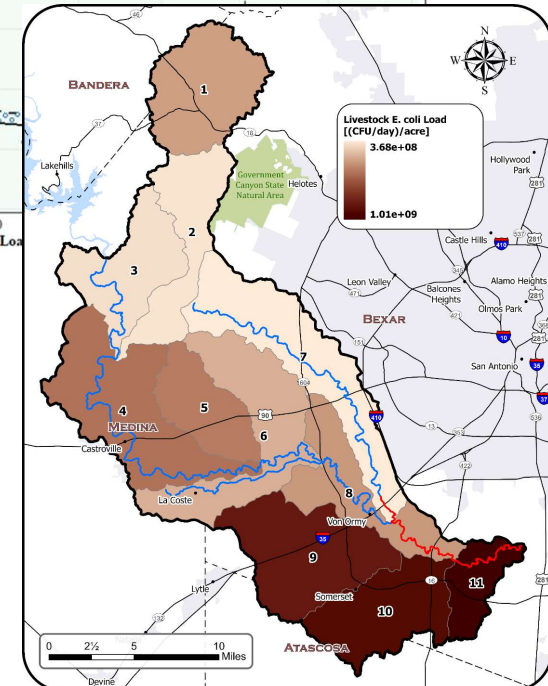
- ✓ Appendix A – Population, Land Use, and Source Projections



- ✓ Appendix B – Load Duration Curves



- ✓ Appendix C – SELECT Analysis



Next Steps

Nov – Jan

- incorporate stakeholder review comments

Jan/Feb

- 30-day public review
- TWRI website

Feb/Mar

- state agency review
- TSSWCB & TCEQ
- ★ Next stakeholder meeting

Mar – ??

- EPA review & acceptance

November 2024						
Sunday	Monday	Tuesday	Wednesday	Thursday	Friday	Saturday
					1	2
3	4	5	6	7	8	9
10	11	12	13	14	15	16
17	18	19	20	21	22	23
24	25	26	27	28	29	30

December 2024						
Sunday	Monday	Tuesday	Wednesday	Thursday	Friday	Saturday
1	2	3	4	5	6	7
8	9	10	11	12	13	14
15	16	17	18	19	20	21
22	23	24	25	26	27	28
29	30	31				

January 2025						
Sunday	Monday	Tuesday	Wednesday	Thursday	Friday	Saturday
			1	2	3	4
5	6	7	8	9	10	11
12	13	14	15	16	17	18
19	20	21	22	23	24	25
26	27	28	29	30	31	

February 2025						
Sunday	Monday	Tuesday	Wednesday	Thursday	Friday	Saturday
						1
2	3	4	5	6	7	8
9	10	11	12	13	14	15
16	17	18	19	20	21	22
23	24	25	26	27	28	



February meeting

Focus on Development

Lee Marlowe, SARA Sustainable Landscape Ecologist

- Low Impact Development & Green Infrastructure
- Demonstration projects
- Developer training & outreach

Mikel Wilkins, SARA Sr Engineer

- Implementing nature-based solutions in developing watersheds

... ? Developer's perspective

... ? Regulator's perspective

... ? Other ideas?

★ February 2025

Sunday	Monday	Tuesday	Wednesday	Thursday	Friday	Saturday
						1
2	3	4	5	6	7	8
9	10	11	12	13	14	15
16	17	18	19	20	21	22
23	24	25	26	27	28	

*Dates to avoid
or other
conflicts?*

Thank You!

Tina Hendon

Program Specialist, TWRI

Tina.Hendon@ag.tamu.edu

979-314-2472

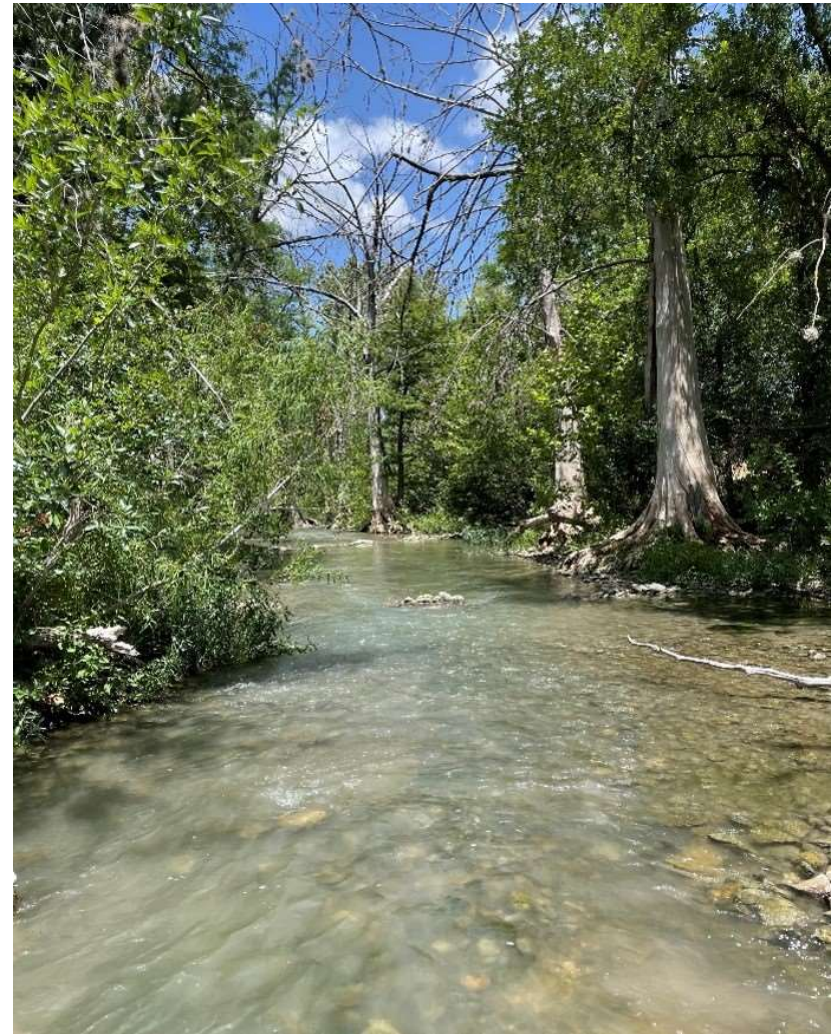
Lucas Gregory

Associate Director, TWRI

lfgregory@ag.tamu.edu

979-314-2361

See you in February!



<https://medina.twri.tamu.edu/>